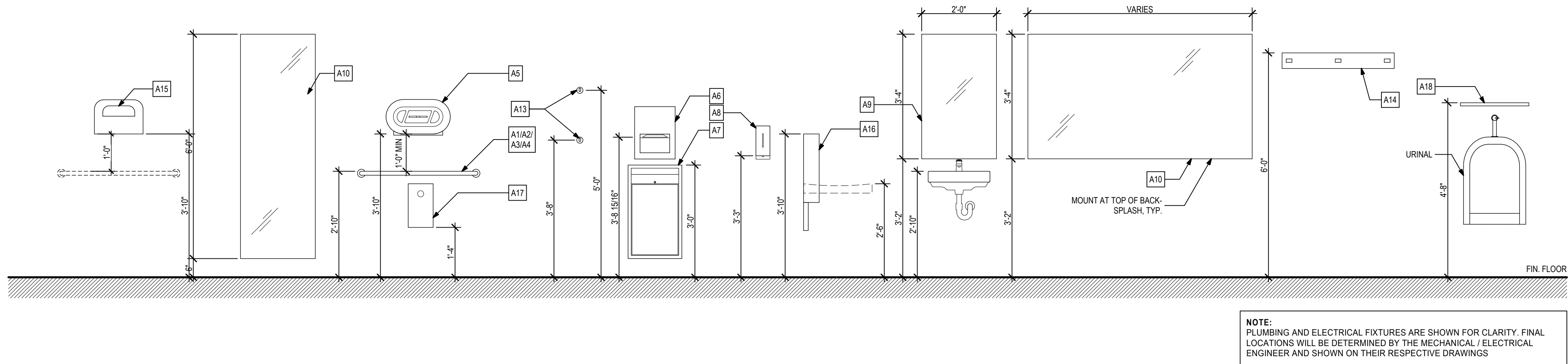


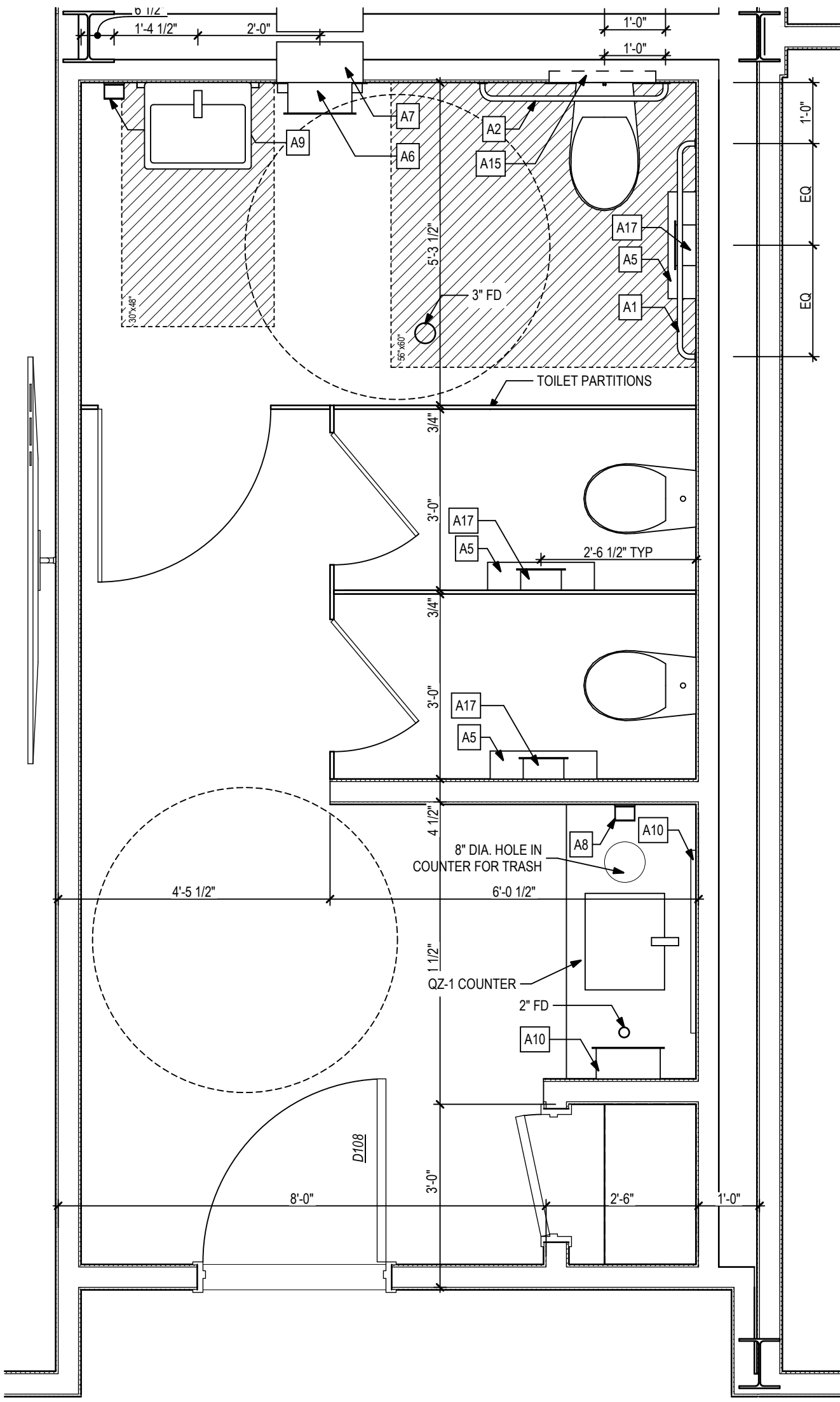
Acc. Mounting Height
1/2" = 1'-0"



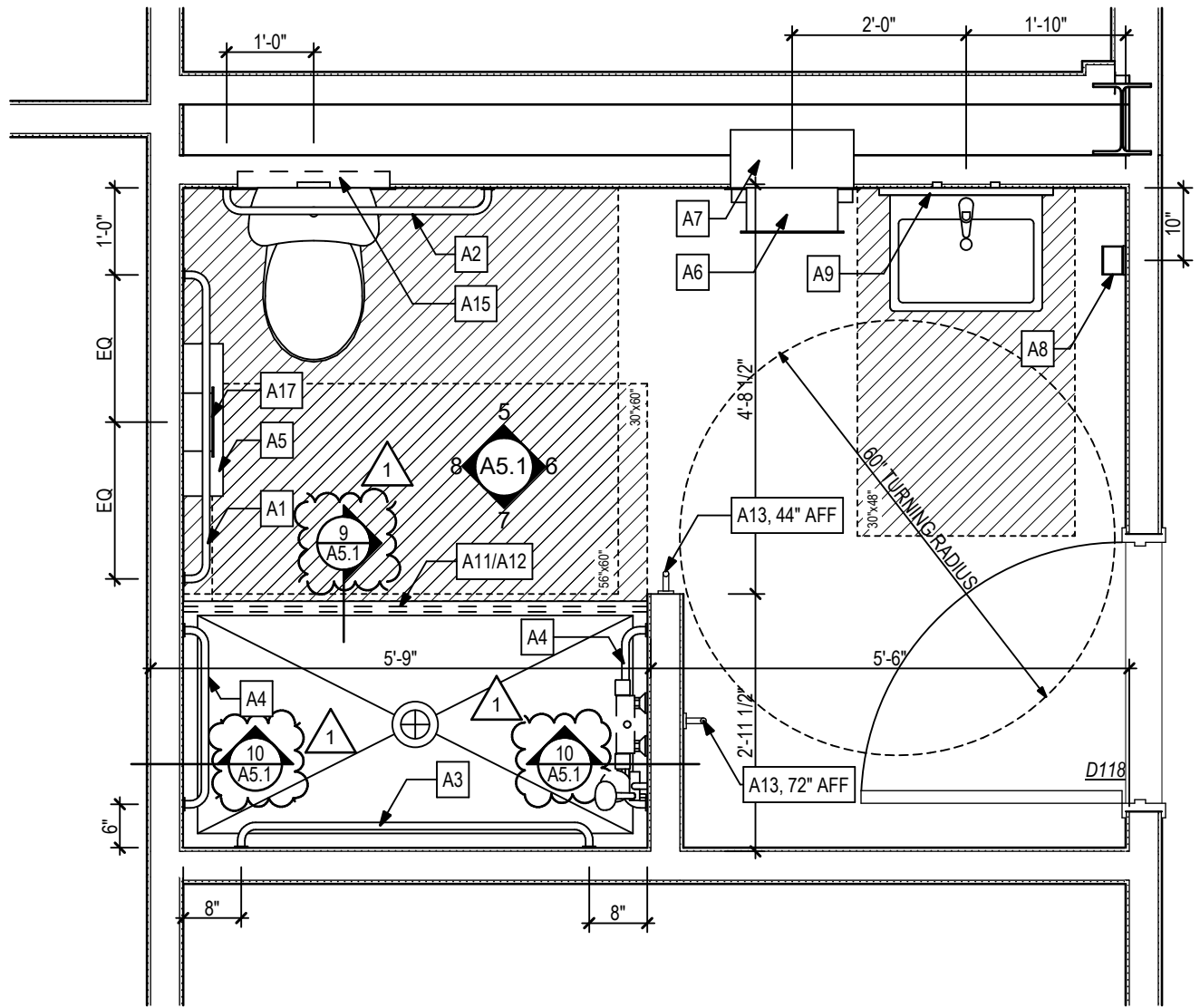
NOTE:
PLUMBING AND ELECTRICAL FIXTURES ARE SHOWN FOR CLARITY. FINAL
LOCATIONS WILL BE DETERMINED BY THE MECHANICAL / ELECTRICAL
ENGINEER AND SHOWN ON THEIR RESPECTIVE DRAWINGS.

Accessory Schedule

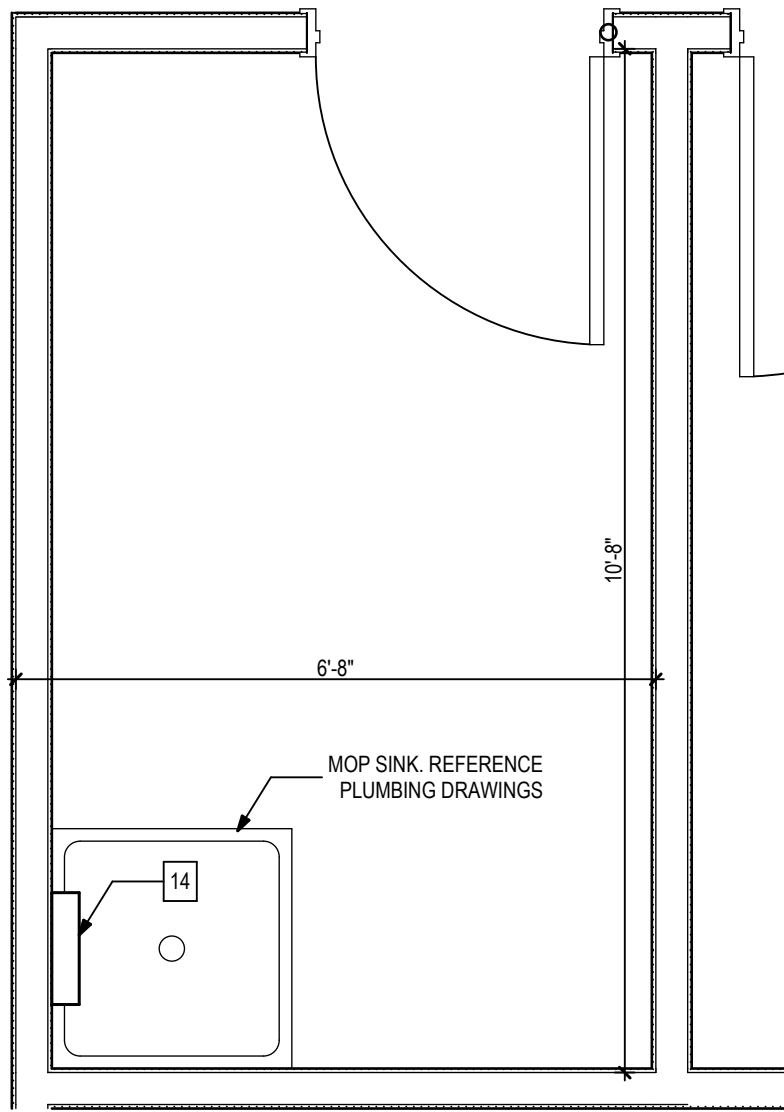
- A1 42" L GRAB BAR, 1 1/2" DIA - BOBRICK, B-9806
- A2 36" L GRAB BAR, 1 1/2" DIA - BOBRICK, B-9806
- A3 48" L GRAB BAR, 1 1/2" DIA - BOBRICK, B-9806
- A4 24" L GRAB BAR, 1 1/2" DIA - BOBRICK, B-9806
- A5 TOILET TISSUE DISPENSER - ULINE JUMBO H-1347 - SURFACE-MOUNTED
- A6 PAPER TOWEL DISPENSER - KIMBERLY-CLARK HANDS-FREE TOWEL DISPENSER H-2272 - SURFACE-MOUNTED
- A7 SEMI-RECESSED STAINLESS STEEL WASTE RECEPTACLE - BOBRICK, B-3644
- A8 SOAP DISPENSER - GOJO TOUCH FREE DISPENSER H-1585
- A9 24" x 40" FRAMELESS MIRROR
- A10 FRAMELESS MIRROR - SIZE VARIES
- A11 HEAVY DUTY SHOWER CURTAIN ROD - BOBRICK B-6107. CUSTOM LENGTH TO FIT SHOWER.
- A12 SHOWER CURATIN HOOKS - BOBRICK 294-1
- A13 COAT HOOK - BOBRICK FMD COLLECTION - FINISH: SATIN STAINLESS STEEL
- A14 MOP HOLDER - BOBRICK, B-223X36
- A15 TOILET SEAT COVER DISPENSER - ULINE H-878SMOKE - SURFACE-MOUNTED
- A16 BABY CHANGING STATION - KOALA KARE KB310 SSWM
- A17 SANITARY NAPKIN RECEPTACLE - ULINE H-3454
- A18 UTILITY SHELF - BOBRICK B-296X14



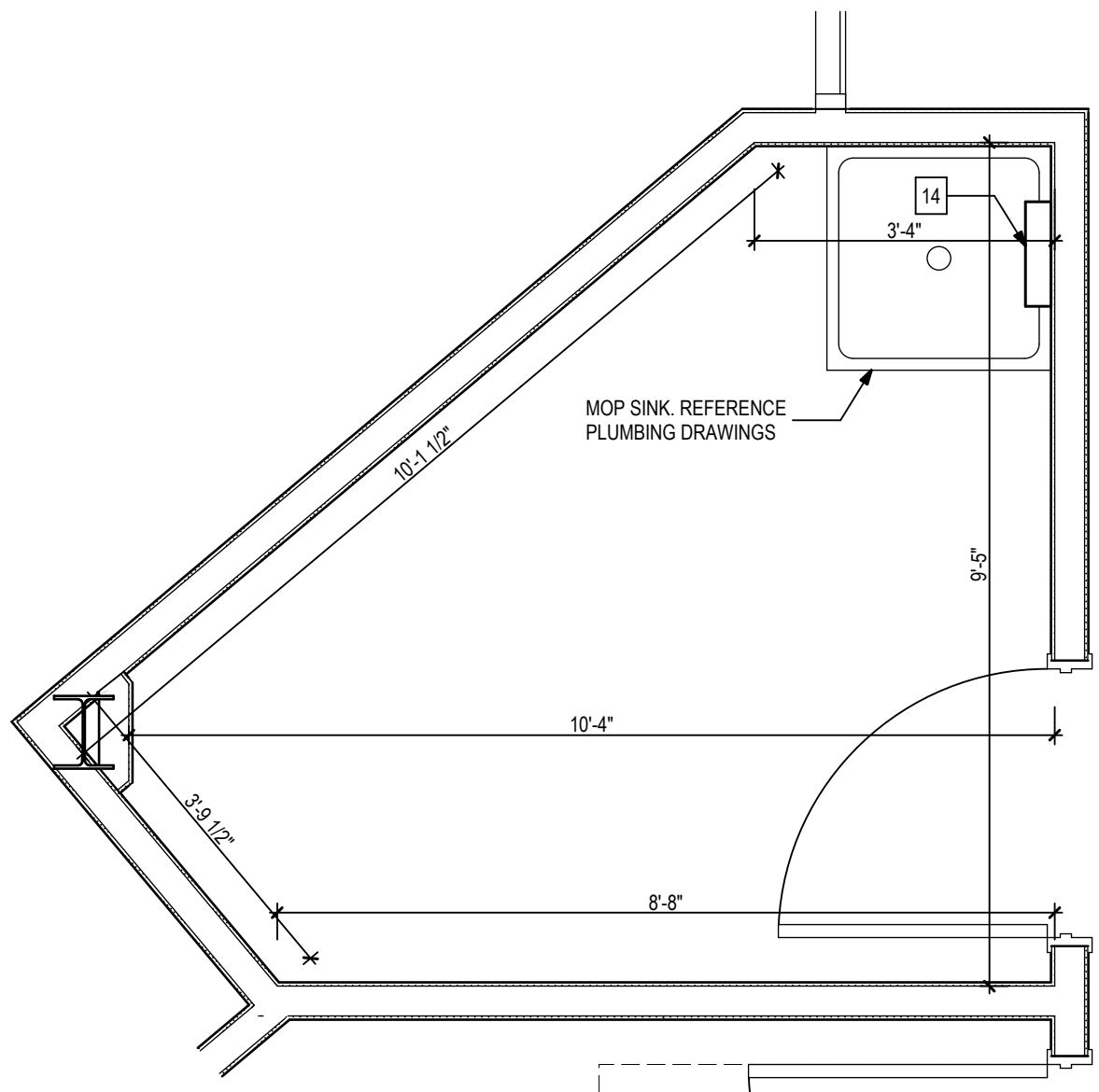
1 Enlarged W. Restroom Plan
1/2" = 1'-0"



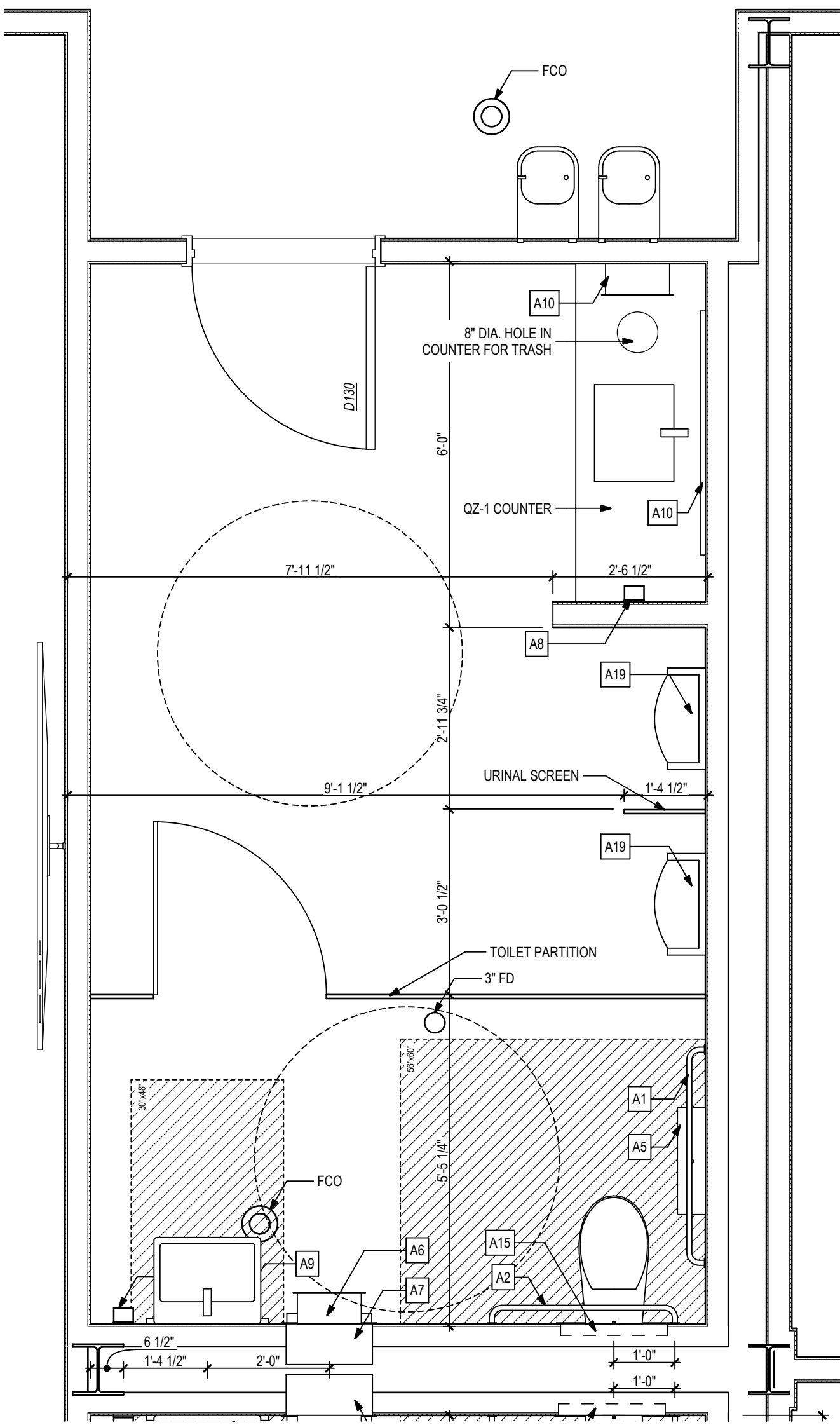
3 Ground Floor - Enlarged U. Restroom Plan
1/2" = 1'-0"



4 Ground Floor - Enlarged Jan. Closet
1/2" = 1'-0"



5 Second Floor - Enlarged Jan. Closet
1/2" = 1'-0"



2 Enlarged M. Restroom Plan
1/2" = 1'-0"

THESE DRAWINGS AND RENDERINGS ARE
INSTRUMENTS OF SERVICE. THE DRAWINGS
INCLUDING ELECTRONIC MEDIA AND CADD
LEADS TO WHITLOCK + PARTNERS, P.A.
ANY PURPOSE EXCEPT BY WRITTEN
PROHIBITED. THIS COPYRIGHT NOTIFICATION
SHALL BE TRUE AS IF DIRECTLY PLACED ON
THIS DOCUMENT AND SHALL NOT BE
REMOVED FROM THESE DOCUMENTS.

PHASE:	DRAWN:	REVIEWED:	DATE:	ID:	REVISION:
DESIGN/DEVELOPMENT	RS, JS, AK, EE	C, WHITLOCK	07/2021	1	ADDENDUM 1
CONSTRUCTION DOCUMENTS	RS, JS, AK, EE	C, WHITLOCK	10/2021		
CONSTRUCTION DOCUMENTS	RS, JS, AK, EE	C, WHITLOCK	10/2021		

Client:
Leon County R&D Authority
Tallahassee, Florida

Job Title:
North Florida Innovation Labs

Consultant:

Project #:
21414

Phase:
100% Construction Documents

ALW

Architects Lewis + Whitlock
206 West Virginia St.
Tallahassee, Florida 32301
850.942.1718
www.lewisandwhitlock.net

Description:
**Enlarged Toilet
Room Plan**

Sheet No.:
A4.2