

LEON COUNTY RESEARCH AND DEVELOPMENT AUTHORITY

INVESTMENT PORTFOLIO

For period ending August 31, 2024

For the Month:

<u>SECURITY OWNED</u>	<u>BALANCE BOM</u>	<u>EARNINGS</u>	<u>ADDITIONS</u>	<u>DEDUCTIONS</u>	<u>BALANCE EOM</u>	<u>YIELD</u>
FL PRIME	\$ 2,025,658.33	\$ 9,431.43	\$ -	\$ -	\$ 2,035,089.76	5.457%
SPIA *	0.00	-	-	-	0.00	
	<u>\$ 2,025,658.33</u>	<u>\$ 9,431.43</u>	<u>\$ -</u>	<u>\$ -</u>	<u>\$ 2,035,089.76</u>	<u>5.482%</u>

For the Fiscal Year Beginning October 1:

<u>SECURITY OWNED</u>	<u>BALANCE BOP</u>	<u>EARNINGS</u>	<u>ADDITIONS</u>	<u>DEDUCTIONS</u>	<u>BALANCE EOP</u>	<u>YIELD</u>
FL PRIME	\$ 685,860.01	\$ 62,290.50	\$ 1,286,939.25	\$ -	\$ 2,035,089.76	5.239%
SPIA	609,978.59	2,830.95	-	612,809.54	0.00	
	<u>\$ 1,295,838.60</u>	<u>\$ 65,121.45</u>	<u>\$ 1,286,939.25</u>	<u>\$ 612,809.54</u>	<u>\$ 2,035,089.76</u>	<u>5.459%</u>

Investments Designated for Capital Projects (North Florida Innovation Labs)	\$ -
Undesignated Investments	\$ 2,035,089.76

SPIA Available Balance (see security description for minimum balance requirements) \$ - *

* SPIA reporting has been delayed--earnings for the month and available balance amounts estimatec

SPIA has approved for 11/10/22 an \$800,000 "emergency withdrawal" (beyond available balance), to cover additional NFIL funding

NOTABLE ADDITIONS OR DEDUCTIONS TO ACCOUNTS:

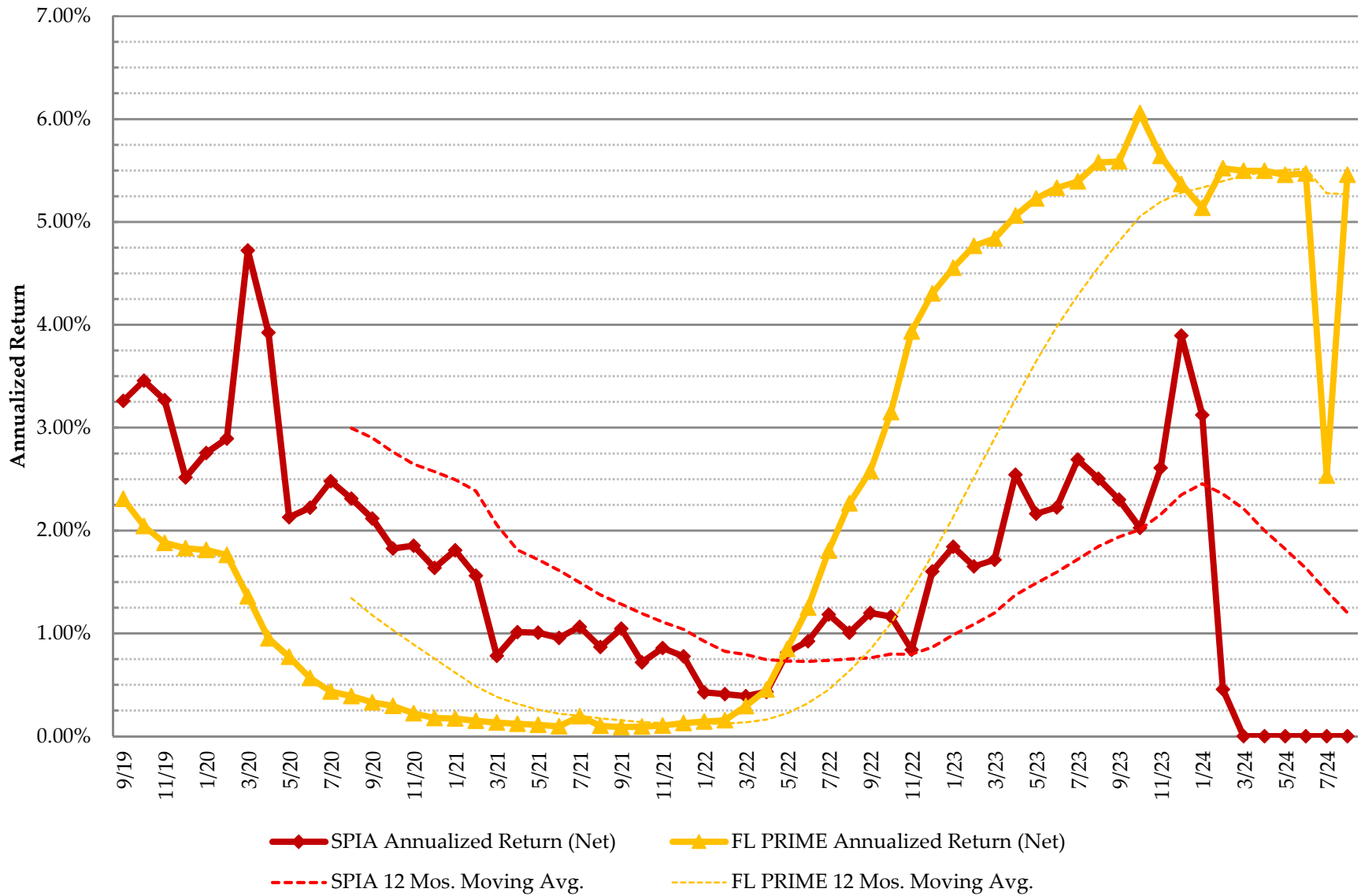
- 7/22 Withdraw \$175,000 of OEV MOU funds for Collins Renovation and marketing expenses
- 9/22 Withdraw \$1,300,000 total from both accounts to pay contribution to NFIL Project
- 11/22 Withdraw \$800,000 total from both accounts to pay contribution to NFIL Project
- 1/24 The total investment amount in the SPIA account has been transferred to FL PRIME to take advantage of a higher interest earning potential.

Note: Security descriptions shown on reverse

SECURITY DESCRIPTIONS:

- FL PRIME - SBA Florida Prime - The Local Government Surplus Funds Trust Fund (Florida PRIME) was created by an Act of the Florida Legislature in 1977 and currently serves over 800 participants across the state. Invests exclusively in short-term, high-quality fixed-income securities rated in the highest short-term rating category by one or more nationally recognized statistical rating organizations, or securities of comparable quality. Seeks to maintain a \$1.00 value and maintain a weighted average maturity of 60 days or less, with the maximum maturity of any investment limited to 397 days. Rated AAAM by Standard & Poor's, the highest rating available for a local government investment pool. Complies with legislation that requires numerous operational and reporting enhancements, including restating investment objectives to emphasize safety, liquidity and competitive returns with minimization of risks; and providing for enhanced internal controls, transparency and communication. Federated Investors has managed the assets of Florida PRIME to the exact specifications of its investment policies since February 13, 2008.
- SPIA – Florida Treasury Special Purpose Investment Trust – The Florida State Treasury operates a special investment program for public entities other than the State. This program is authorized in Section 17.61(1), Florida Statutes and is called the Treasury Special Purpose Investment Account (SPIA). Component units of the State, Universities, or Colleges that are created by the Florida Constitution or Florida Statutes are eligible to invest in SPIA. Current non-component unit participants, like the Authority, are allowed to stay in the program with capped investment limits and a minimum balance equal to 60% of the previous 3 months average balance. Liquidations in excess of the minimum balance require 6 months' notice. SPIA funds are invested in the same portfolio as Treasury funds, so the pool of funds has a stable base of funds (over 85% of the funds are captive trust funds) not needed for immediate disbursement. These funds are invested in a combination of short-term liquid instruments and intermediate-term fixed income securities. This “barbell” investment strategy, along with incremental income produced by securities lending, has the ability to return higher yields than a typical money market fund. Participants have the ability to invest and obtain fund withdrawals same day with an 11:00 a.m. deadline for notifying the Treasury. The SPIA maintains a credit rating of A+f by Standard & Poor's.

Leon County Research & Development Authority Investment Yield



Leon County Research & Development Authority Investments Balances

