

Leon County Research and Development Authority
Development Review Committee
Knight Administrative Centre
Tuesday, July 10, 2018, 9:00 a.m.

Agenda

1. Call to Order
2. Introduction of Guests
3. Modifications to the Agenda
4. Public Comment
5. Approval of Minutes, March 13, 2018 (*Attachment A*)
6. FSU Center for Advanced Power Systems Expansion (*Attachments B1-B4*)

Florida State University is requesting approval of its project to complete an addition of a research lab building for the Center for Advanced Power Systems to the FSU Research Foundation A Building. The 6,189 GSF building is a high bay open lab with 4 offices, a student study area, a HV lab, toilet rooms, and an electrical room.

7. New Business
8. Adjourn

Leon County Research and Development Authority
Development Review Committee
Knight Administrative Centre
1736 W Paul Dirac Drive 32310
Tuesday, March 13, 2018, 9:00 am

Minutes

Members in Attendance: Ron Miller, Greg Harden, Cheryl McCall, Ron Miller

Members not in Attendance: Patrick Hoy, Kimberly Strobel-Ball

Guests: Carson Mitchell (DEP) Chris Neal (Danfoss), Peggy Bielby (LCRDA staff). Via Skype: Levi Sciara, Jennifer Carr, Brian Biggs (Gresham Smith and Partners)

1. Call to order

The meeting was called to order at 9:05am.

2. Introduction of Guests

All present introduced themselves.

3. Modifications to the Agenda

None.

4. Public Comment

None.

5. Approval of Minutes, November 14, 2017

Greg Harden offered a motion to approve the November 14, 2017 minutes. Cheryl McCall seconded the motion which passed unanimously.

6. Danfoss Turbocor Phase B and D Expansion

Danfoss Turbocor requests approval of its project to complete a multi-phased expansion of its corporate headquarters and manufacturing facility. Phase B includes a 20,750 GSF expansion of the office area with exhibit and training space. Phase D includes supplemental parking across North Paul Dirac Drive from the existing facility. The construction will begin in second quarter 2018 with construction completed in second quarter 2019.

Greg Harden presented a City of Tallahassee Growth Management Department Memorandum that set forth Recommended Conditions of Approval and Permitting Comments.

Cheryl McCall offered a motion to approve the project as presented, subject to the additional considerations as set forth in the City of Tallahassee Growth Management Memorandum. Greg Harden seconded the motion which passed unanimously.

7. New Business

None.

8. Adjourn

The meeting was adjourned at 9:25am.

**CITY OF TALLAHASSEE/INNOVATION PARK
SITE PLAN REVIEW
COMPLETENESS DETERMINATION CHECKLIST**

In order for an application to be eligible for review, the following materials must be submitted to the Innovation Park/Tallahassee Development Review Committee. Five copies are required for this review.

APPLICANT
VERIFICATION

STAFF
VERIFICATION

✓

✓

✓

✓

✓

✓

1. The applicant shall submit to the Innovation Park/Tallahassee Development Review Committee a detailed statement of objectives indicating:
 - a. The general purpose of the development
 - b. The type and square footage of non-residential development including floor area ratios, pervious and impervious surface areas, and other standards as may be required.
2. A site conditions map drawn to an appropriate engineer's scale sufficient to show and to depict the location of existing property lines for both private and public property (boundary survey), existing contours shown at a contour interval of two (2) feet, streets, buildings, watercourses, transmission lines, sewers, culverts, and drain pipes, water mains, public utility easements, wooded area, streams, lakes, marshes, and any other physical conditions on the site.
3. A site plan shall be drawn to an appropriate engineer's scale showing:
 - a. The proposed grading plan.
 - b. All rights-of-way and easements showing points of reference.
 - c. All proposed buildings and other structures.

N/A

✓

N/A

N/A

✓

✓

✓

✓

✓

✓

- d. The location of phase lines indicating all applicable construction phases if applicable.
 - e. The off-street parking and loading plan.
 - f. A circulation diagram showing vehicular and pedestrian movements including any special engineering features and traffic regulation devices.
 - ✓ g. Provisions for the control of signs including size, shape and appearance.
4. A utility service plan showing:
 - a. Existing drainage and sewer lines.
 - b. The disposition and/or retention of sanitary waste and storm water.
5. A landscaping plan showing:
 - a. Landscaped areas.
 - b. All specimen trees or groups of trees thirty-six (36) inches in diameter or larger, indicating those to be retained, removed, or relocated.
 - c. The location, height, and material for walks, fences, walkways, and other man-made landscape features.
 - d. Any special landscape features including but not limited to, man-made lakes, land sculptures and waterfalls.
6. Statistical information including:
 - a. Total acreage of the site.
 - b. Maximum building coverage expressed as a percentage of the total site area.
 - c. The area of land devoted to rights-of-way, transportation easements, parking and other transportation facilities expressed as a percentage of the total site area.
 - d. The area of land devoted to undisturbed open space expressed as a percentage of the total site area.
 - e. The calculated density/intensity for the project and impervious percentage.

✓ _____

7. Development schedule showing order of construction, proposed date for the beginning of construction and completion of the project as a whole and any phases thereof.

✓ _____

8. This completed checklist.

✓ _____

9. Other relevant information which is deemed to be appropriate by the Innovation Park/Tallahassee Development Review Committee to ensure consideration of all relevant issues.

If the Innovation Park/Tallahassee Development Review Committee refers the project to the City of Tallahassee the following will be required:

N/A _____

10. Completed application for Site Plan Review - Type A.

N/A _____

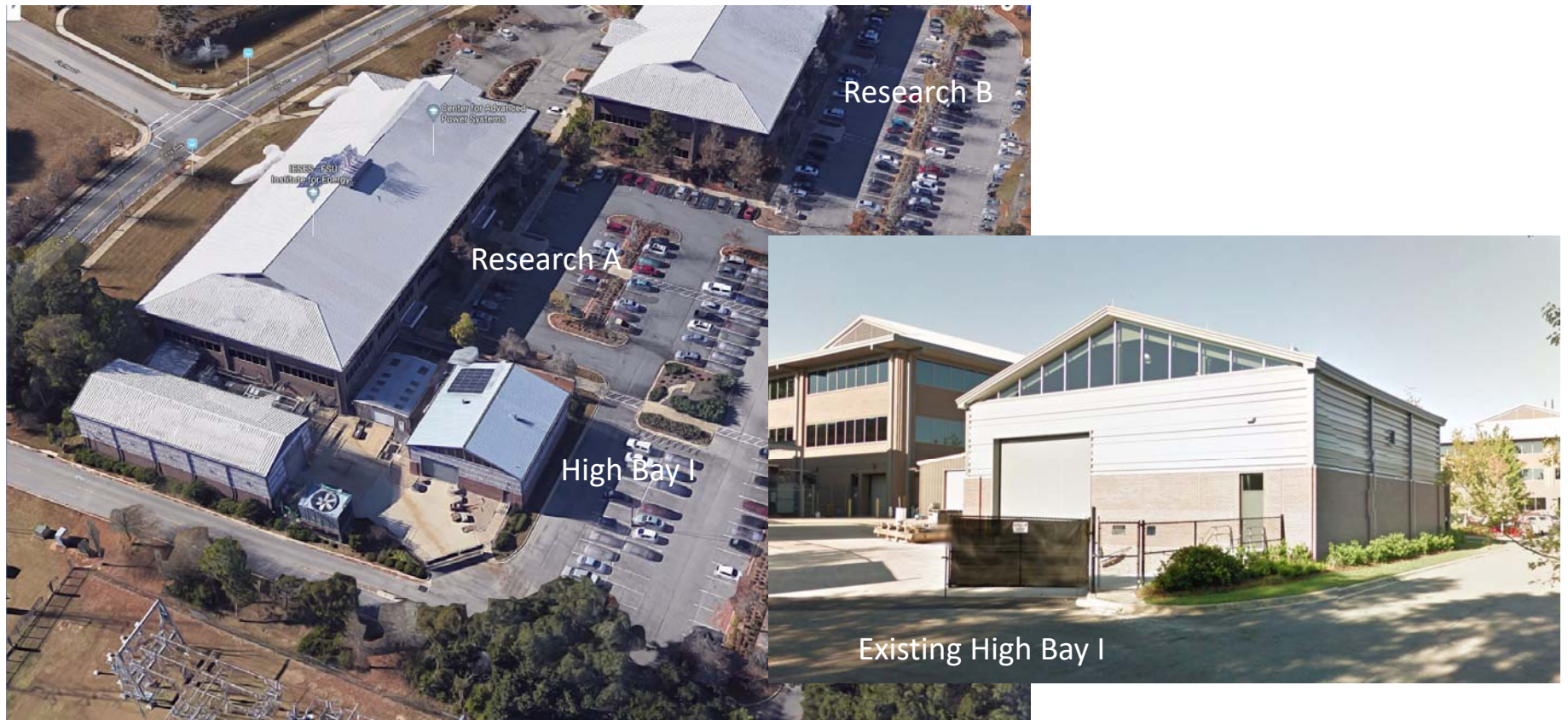
11. Application fee.

Note: All of the items listed above must be submitted at time of application, unless the Development Review Committee Chairman waives a specific item.

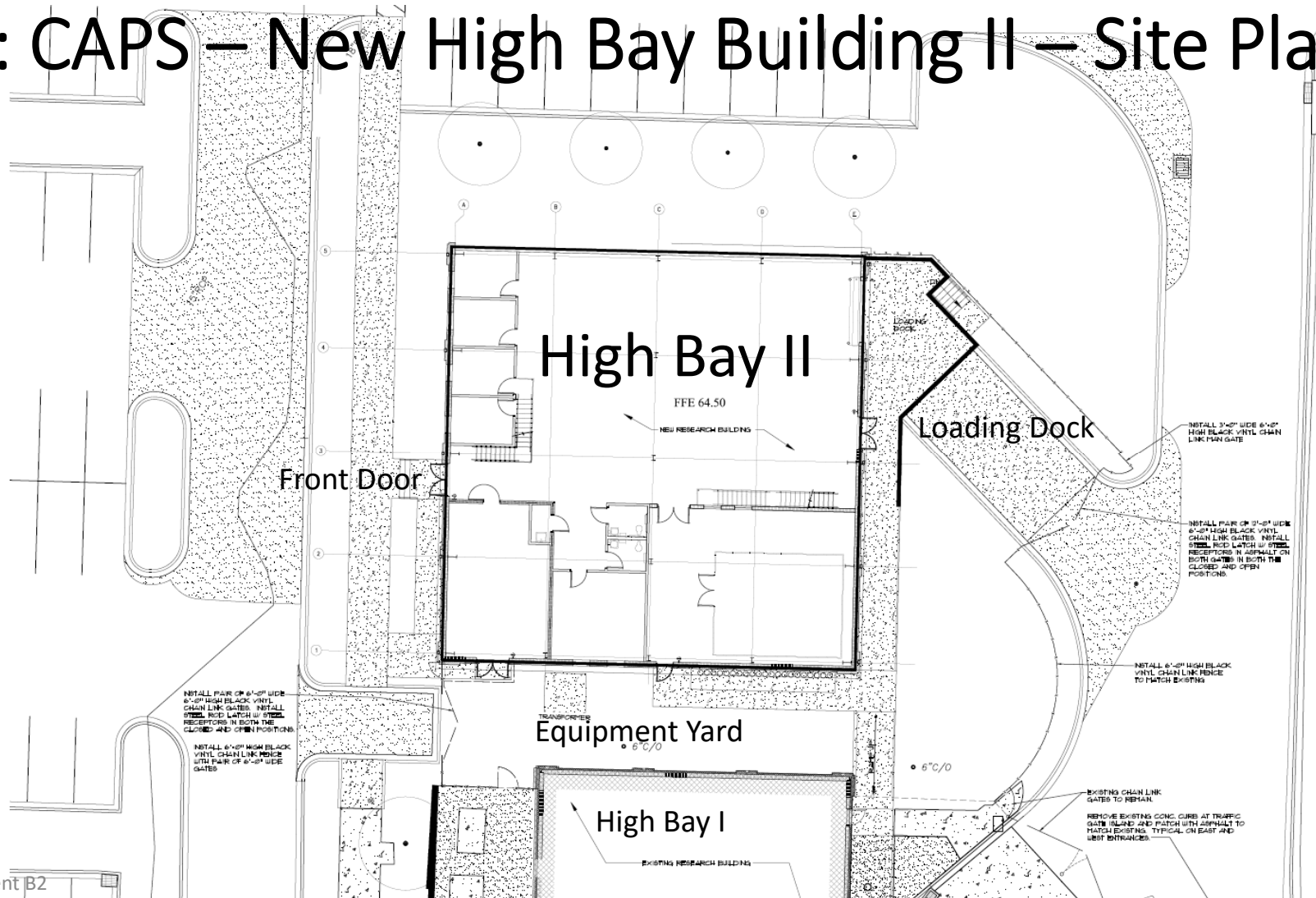
FSU: CAPS – New High Bay Building II – Site



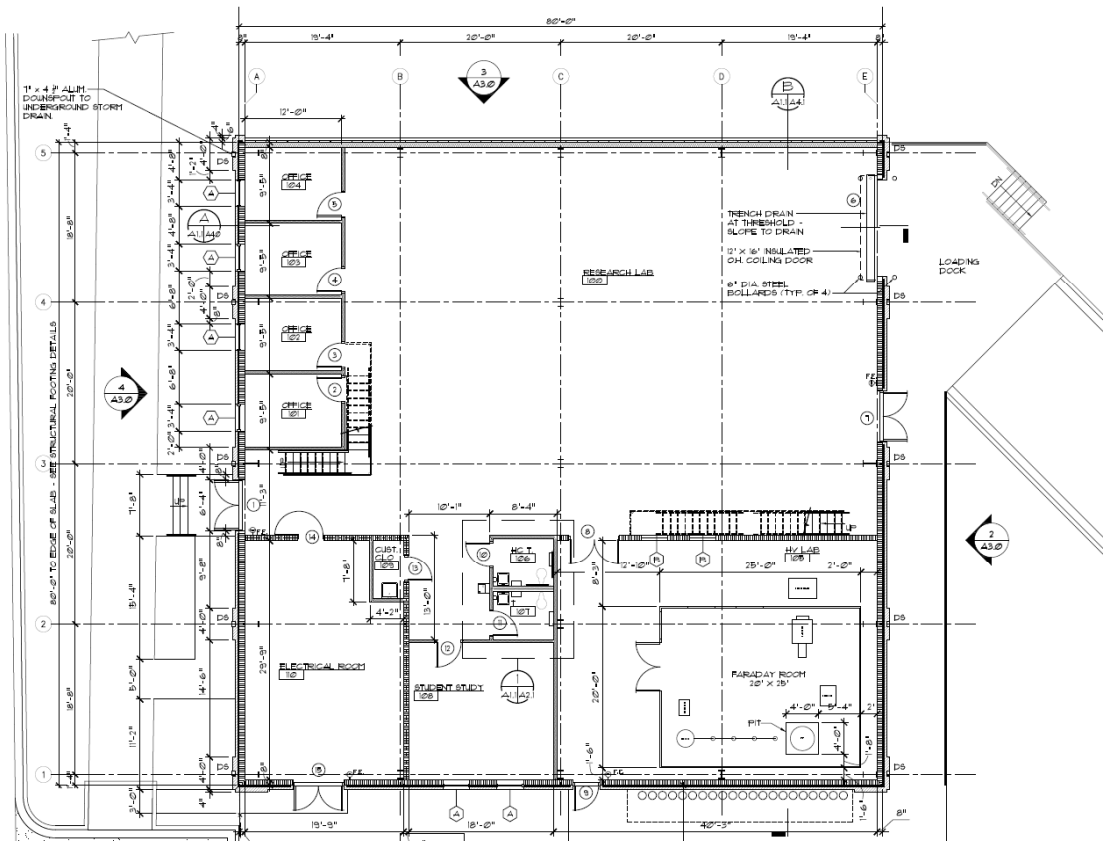
FSU: CAPS – New High Bay Building II – Precedents



FSU: CAPS – New High Bay Building II – Site Plan

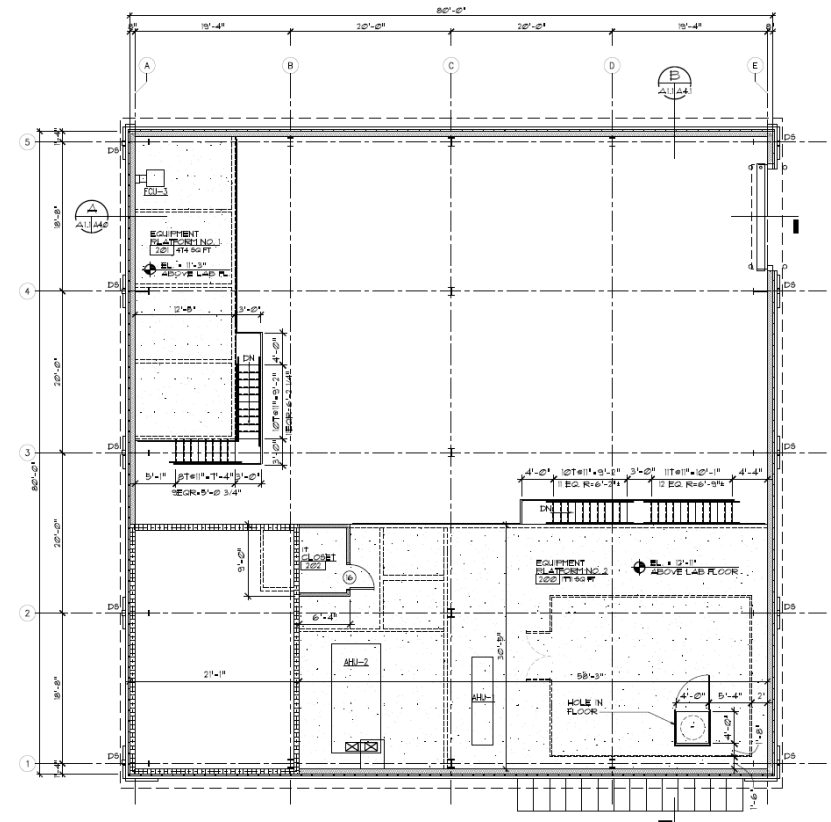


FSU: CAPS – New High Bay Building II – Floor Plans



First Floor Plan

Attachment B2



Mezzanine Plan

RESEARCH BUILDING
CENTER FOR ADVANCED POWER SYSTEMS
2000 LEVY AVE.
FSU PROJECT NO. 1800035
FLORIDA STATE UNIVERSITY
TALLAHASSEE, FLORIDA

Hicks
Nation
Architects
Incorporated

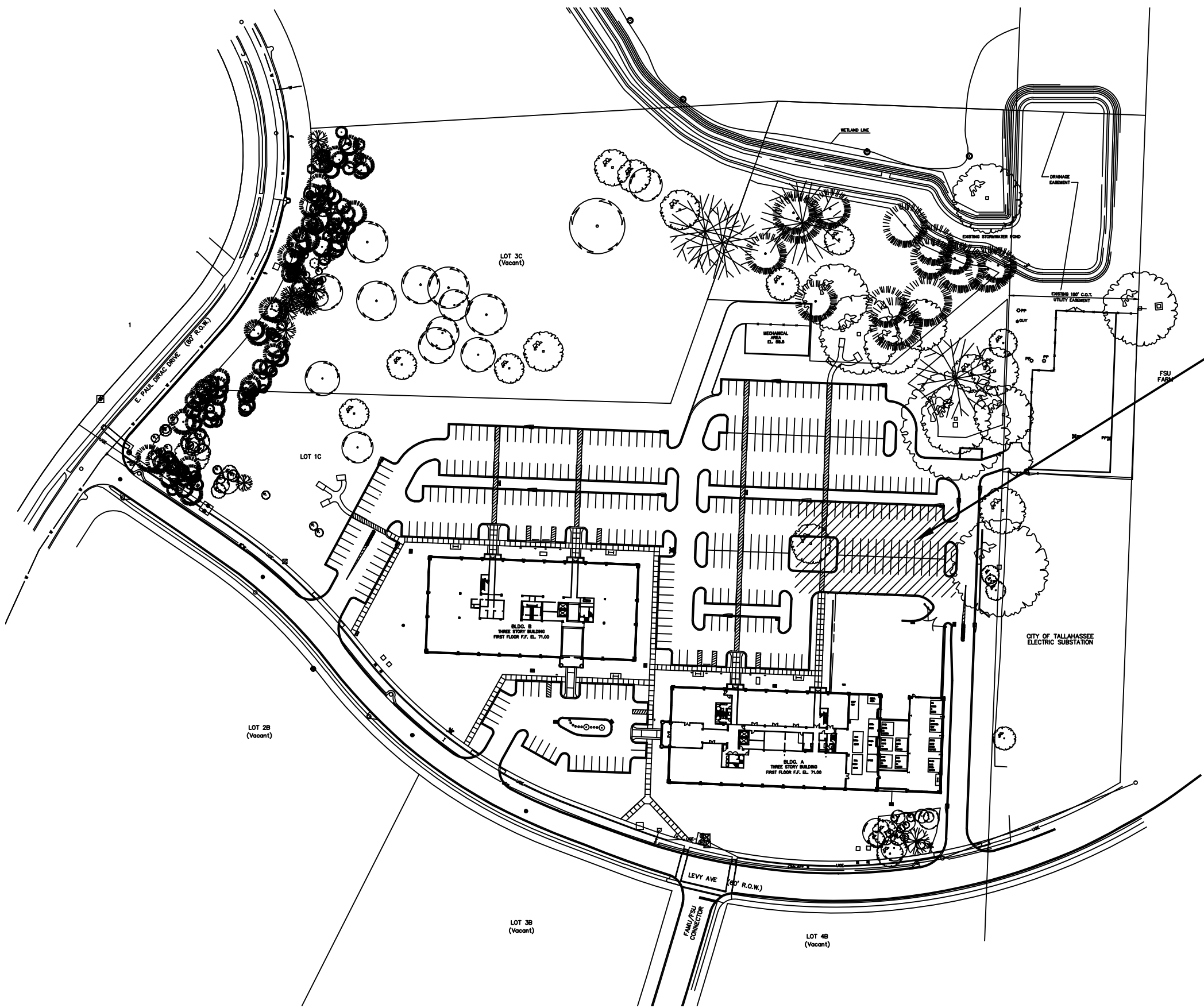
Architecture
Programming
Planning

1382
Timberlane Road
Suite C
Tallahassee FL
32312
850.893.1130
License Number
AA C00 1403

Project Site



LOCATION MAP



Project Site

INDEX TO DRAWINGS

DWG. NO.	SHEET NO.	TITLE
G11	1 OF 46	TITLE SHEET, INDEX TO DRAWINGS & LOCATION MAP
G12	2 OF 46	BUILDING DESIGN SUMMARY, GENERAL NOTES & LIFE SAFETY PLAN
C10	3 OF 46	EXISTING SITE SURVEY
C11	4 OF 46	DEMOLITION PLAN
C12	5 OF 46	SITE PLAN & SITE DETAILS
C30	6 OF 46	GRADING & DRAINAGE PLAN
C40	7 OF 46	UTILITY PLAN
A10	8 OF 46	ARCHITECTURAL SITE PLAN
A11	9 OF 46	FLOOR PLAN AND EQUIPMENT PLATFORM PLAN
A12	10 OF 46	ROOF PLAN
A13	11 OF 46	PLAN DETAILS
A21	12 OF 46	ENLARGED PLANS AND ROOM FINISH SCHEDULE
A22	13 OF 46	DOOR SCHEDULE AND DETAILS
A23	14 OF 46	WINDOW ELEVATIONS & DETAILS
A30	15 OF 46	EXTERIOR ELEVATIONS
A40	16 OF 46	BUILDING SECTION
A41	17 OF 46	BUILDING SECTION
A42	18 OF 46	ENLARGED STAIR PLANS & SECTIONS
A50	19 OF 46	WALL SECTIONS
A51	20 OF 46	WALL SECTIONS
S10	21 OF 46	STRUCTURAL NOTES
S11	22 OF 46	STRUCTURAL NOTES
S12	23 OF 46	C & C WINDLOAD DIAGRAMS
S21	24 OF 46	FOUNDATION & PLATFORM PLANS
S22	25 OF 46	ROOF FRAMING PLAN
S30	26 OF 46	FOUNDATION DETAILS
S40	27 OF 46	MASONRY DETAILS
S50	28 OF 46	FRAMING DETAILS
F11	29 OF 46	FARADAY ROOM PLAN & ELEVATIONS
M01	30 OF 46	ABBREVIATIONS, LEGENDS & GENERAL NOTES
M02	31 OF 46	MECHANICAL SCHEDULES
M10	32 OF 46	FLOOR PLAN - NEW WORK - HVAC
M11	33 OF 46	FLOOR PLAN - NEW WORK - HVAC PIPING
M12	34 OF 46	SITE PLAN
M20	35 OF 46	MECHANICAL DETAILS
M21	36 OF 46	MECHANICAL DETAILS
M22	37 OF 46	MECHANICAL DETAILS
P01	38 OF 46	PLUMBING SPECIFICATIONS, LEGEND & SCHEDULES
P10	39 OF 46	FLOOR PLAN - PLUMBING
P20	40 OF 46	PLUMBING DETAILS
E01	41 OF 46	SYMBOLS, LEGENDS, ABBREVIATIONS & GENERAL NOTES
E02	42 OF 46	PROJECT SPECIFICATIONS
E03	43 OF 46	PARTIAL POWER RISER DIAGRAM
E10	44 OF 46	FLOOR PLAN, EQUIPMENT PLATFORM PLAN - POWER SYSTEMS
E11	45 OF 46	FLOOR PLAN, EQUIPMENT PLATFORM PLAN - LIGHTING
E12	46 OF 46	ROOF PLAN - LIGHTNING PROTECTION

RESEARCH BUILDING
CENTER FOR ADVANCED POWER SYSTEMS
FSU PROJECT NO. 1800035
FLORIDA STATE UNIVERSITY
TALLAHASSEE, FLORIDA

JULY 6, 2018
HNA No. 1708

CONSTRUCTION DOCUMENTS



John W. Nation
AR 12778

G1.1

THESE DRAWINGS AND RENDERINGS ARE INSTRUMENTS OF SERVICE. THE DRAWINGS AND COPIES THEREOF, INCLUDING ELECTRONIC MEDIA AND CAD FILES, ARE THE PROPERTY OF HICKS NATION ARCHITECT, INC. THEIR USE, REPRESENTATION OR REPRODUCTION IN ANY FORM OR CONTENT BY ANY OTHER PARTY WITHOUT THE WRITTEN PERMISSION OF HICKS NATION ARCHITECT, INC. IS PROHIBITED. THIS COPYRIGHT NOTIFICATION SHALL BE TRUE AS IF DIRECTLY PLACED ON EACH DRAWING EXHIBIT OR RENDERING ON THIS DOCUMENT AND SHALL NOT BE REMOVED FROM THESE DOCUMENTS. JERRY L. HICKS, COPYRIGHT © 2012

THESE DRAWINGS AND RENDERINGS ARE INSTRUMENTS OF SERVICE. THE DRAWINGS AND COPIES THEREOF, INCLUDING ELECTRONIC MEDIA AND CAD FILES, ARE THE PROPERTY OF HICKS NATION ARCHITECT, INC. THEIR USE, REPRESENTATION OR REPRODUCTION IN ANY FORM OR MANNER WITHOUT THE WRITTEN AGREEMENT OF HICKS NATION ARCHITECT, INC. IS PROHIBITED. THESE DOCUMENTS, DRAWINGS, AND COPIES THEREOF, INCLUDING ELECTRONIC MEDIA AND CAD FILES, ARE THE PROPERTY OF HICKS NATION ARCHITECT, INC. THEIR USE, REPRESENTATION OR REPRODUCTION IN ANY FORM OR MANNER WITHOUT THE WRITTEN AGREEMENT OF HICKS NATION ARCHITECT, INC. IS PROHIBITED. THESE DOCUMENTS, DRAWINGS, AND COPIES THEREOF, INCLUDING ELECTRONIC MEDIA AND CAD FILES, ARE THE PROPERTY OF HICKS NATION ARCHITECT, INC. THEIR USE, REPRESENTATION OR REPRODUCTION IN ANY FORM OR MANNER WITHOUT THE WRITTEN AGREEMENT OF HICKS NATION ARCHITECT, INC. IS PROHIBITED.

GENERAL NOTES:

1. NO PROVISION OF ANY REFERENCED STANDARD SPECIFICATION, MANUAL OR CODE (WHETHER OR NOT SPECIFICALLY INCORPORATED BY REFERENCE IN THE CONTRACT DOCUMENTS) SHALL BE EFFECTIVE TO CHANGE THE DUTIES AND RESPONSIBILITIES OF OWNER, CONTRACTOR, ARCHITECT, ENGINEER, OR SUPPLIER OR ANY OF THEIR CONSULTANTS, AGENTS OR EMPLOYEES FROM THOSE SET FORTH IN THE CONTRACT DOCUMENTS, NOR SHALL IT BE EFFECTIVE TO ASSIGN TO THE ARCHITECT OR ANY OF THE ARCHITECT'S CONSULTANTS, AGENTS, OR EMPLOYEES ANY DUTY OR AUTHORITY TO SUPERVISE OR DIRECT THE FURNISHING OR PERFORMANCE OF THE WORK OR AUTHORITY TO UNDERTAKE RESPONSIBILITIES CONTRARY TO THE PROVISIONS OF THE CONTRACT DOCUMENTS.
2. THE CONTRACTOR SHALL FIELD VERIFY THE DIMENSIONS, ELEVATIONS, SITE CONDITIONS ETC. NECESSARY FOR THE PROPER CONSTRUCTION AND ALIGNMENT OF THE NEW PORTIONS OF THE WORK TO THE EXISTING WORK. PRIOR TO STARTING WORK THE CONTRACTOR SHALL MAKE ALL MEASUREMENTS NECESSARY FOR FABRICATION AND ERECTION OF STRUCTURAL MEMBERS. ANY DISCREPANCY SHALL BE IMMEDIATELY BROUGHT TO THE ATTENTION OF THE ARCHITECT OR ENGINEER.
3. MATERIALS AND WORKMANSHIP SHALL CONFORM TO THE FLORIDA BUILDING CODE SIXTH EDITION (2017).
4. THE CONTRACTOR SHALL COORDINATE THE ARCHITECTURAL, MECHANICAL, ELECTRICAL, PLUMBING AND CIVIL WORKS OF THE CONTRACT DOCUMENTS. ARCHITECT OF RECORD SHALL BE NOTIFIED ON ANY DISCREPANCIES OR OMISSIONS.
5. THE CONTRACTOR SHALL NOTIFY IN WRITING THE ARCHITECT OF CONDITIONS ENCOUNTERED IN THE FIELD CONTRADICTORY TO THOSE SHOWN ON THE CONTRACT DOCUMENTS.
6. ARCHITECTURAL AND STRUCTURAL CONTRACT DOCUMENTS SHALL NOT INCLUDE SHOP DRAWINGS, VENDOR DRAWINGS, OR ANY MATERIAL PREPARED AND SUBMITTED BY THE CONTRACTOR OR SUBCONTRACTOR.
7. REFERENCE TO STANDARD SPECIFICATIONS OF ANY TECHNICAL SOCIETY, ORGANIZATION OR ASSOCIATION TO CODES OF LOCAL OR STATE AUTHORITIES, SHALL MEAN THE LATEST STANDARD CODE, SPECIFICATION OR TENTATIVE SPECIFICATION ADOPTED AND PUBLISHED THE DATE OF TAKING BIDS UNLESS SPECIFICALLY STATED OTHERWISE.
8. ANY CONTRACTOR INTENDING TO SUPPORT EQUIPMENT, PIPING, DUCT WORK, CRANES OR OTHER ITEMS WHICH SUBJECT THE ROOF OR FLOOR SYSTEMS TO CONCENTRATED LOADING NOT SPECIFICALLY INDICATED ON THESE DRAWINGS, MUST OBTAIN APPROVAL OF SUCH LOADING FROM THE ARCHITECT OF RECORD PRIOR TO ERECTION. ANY CONTRACTOR WHO ERECTS EQUIPMENT WITHOUT OBTAINING SUCH APPROVAL WILL BE RESPONSIBLE FOR THE COST OF REQUIRED REINFORCEMENT OF MEMBERS.
9. THE GENERAL CONTRACTOR SHALL BE RESPONSIBLE FOR INITIATING, MAINTAINING AND SUPERVISING ALL SAFETY PRECAUTIONS AND PROGRAMS IN CONNECTION WITH THE PERFORMANCE OF THE CONTRACT. THE CONTRACTOR SHALL GIVE NOTICES AND COMPLY WITH ALL APPLICABLE LAWS, ORDINANCES, RULES, REGULATIONS AND LAWFUL ORDER OF PUBLIC AUTHORITIES (ESPECIALLY OSHA) BEARING ON SAFETY OF PERSONS OR PROPERTY, OR THEIR PROTECTION FROM DAMAGE, INJURY OR LOSS. THE CONTRACTOR SHALL NOT LOAD OR PERMIT ANY PART OF THE CONSTRUCTION SITE TO BE LOADED SO AS TO ENDANGER ITS SAFETY.
10. IN NO CASE SHALL STRUCTURAL ALTERATIONS OR WORK AFFECTING A STRUCTURAL MEMBER BE MADE, UNLESS APPROVED BY ARCHITECT IN WRITING.

SUBMITTALS:

1. REVIEW OF SUBMITTALS AND/OR SHOP DRAWINGS BY THE ARCHITECT/ ENGINEER OF RECORD DOES NOT RELIEVE THE CONTRACTOR OF THE SOLE RESPONSIBILITY TO REVIEW AND CHECK SHOP DRAWINGS BEFORE SUBMITTAL. THE CONTRACTOR REMAINS SOLELY RESPONSIBLE FOR ERRORS AND OMISSIONS ASSOCIATED WITH THE PREPARATION OF DIMENSIONS SPECIFIED IN THE CONTRACT DOCUMENTS. CONTRACTOR ALSO SHALL BE RESPONSIBLE FOR MEANS, METHOD, TECHNIQUES, SEQUENCES, AND PROCEDURES OF CONSTRUCTION.
2. THE CONTRACTOR MUST NOTIFY THE ARCHITECT, IN WRITING, RELATIVE TO ANY DEVIATION FROM THE CONTRACT DOCUMENTS, WHICH APPEARS IN THE SHOP DRAWINGS, SAMPLES AND PRODUCT DATA. APPROVAL OF THE SUBMITTAL CONTAINING SUCH DEVIATION DOES NOT CONSTITUTE APPROVAL OF THE DEVIATION. APPROVAL OR REJECTION OF THE DEVIATION WILL ONLY BE PROVIDED BY THE ARCHITECT IN A SEPARATE WRITTEN COMMUNICATION TO THE CONTRACTOR. THE ARCHITECT IS NOT RESPONSIBLE FOR DISCOVERY OF DEVIATIONS NOT COMMUNICATED BY CONTRACTOR.

CONSTRUCTION SEQUENCE:

IT IS CRITICAL THAT THE OWNERS OPERATIONS NOT BE DISTURBED DURING THE CONSTRUCTION PROCESS. THE BUILDING SITE WILL NEED TO BE MAINTAINED IN A SECURE STATUS WHEN UNOCCUPIED.

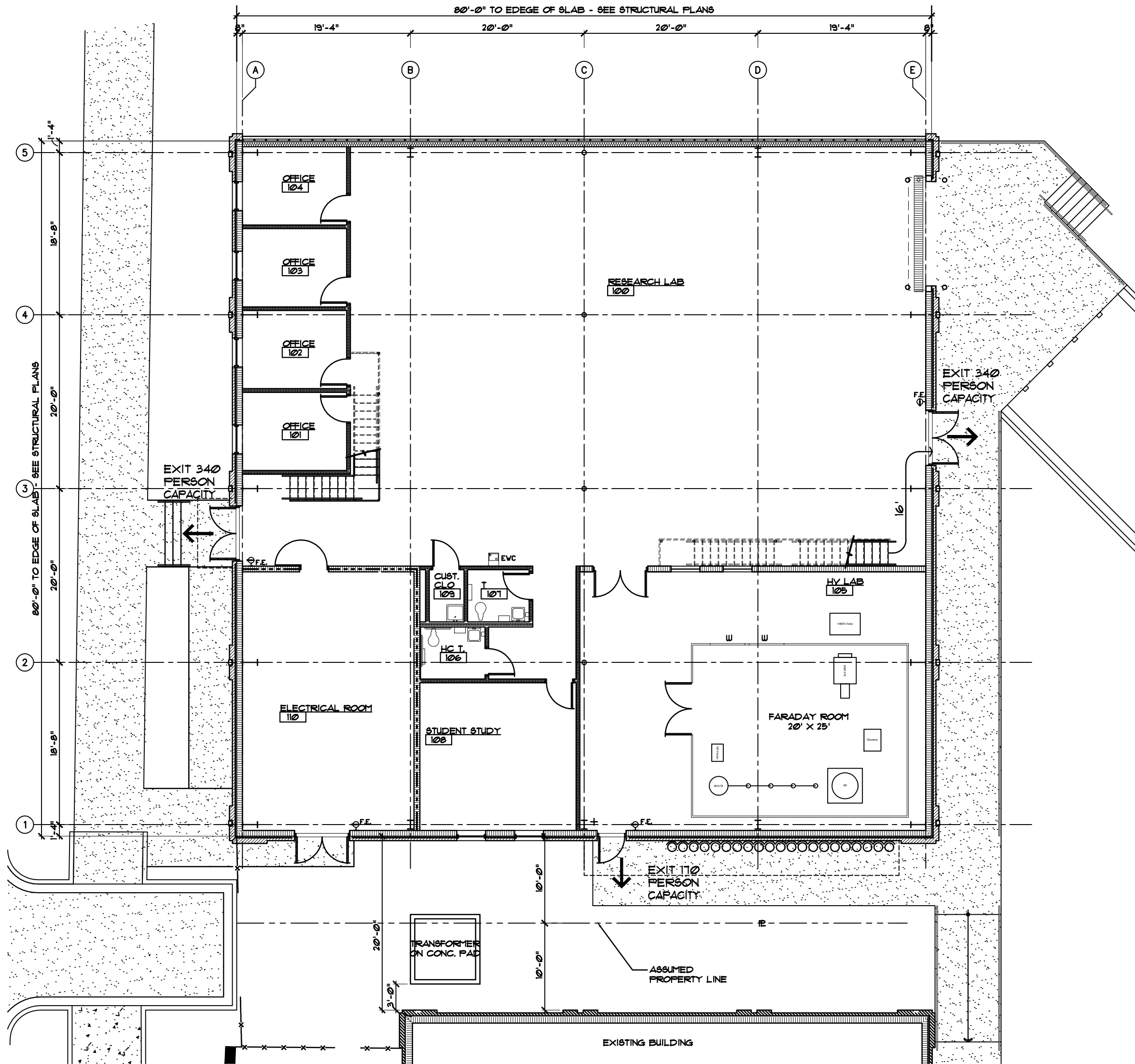
JOB SITE SAFETY:

THE GENERAL CONTRACTOR IS SOLELY RESPONSIBLE FOR JOB SITE SAFETY AND FOR CONFORMANCE WITH THE HEALTH AND SAFETY PROVISIONS REQUIRED BY ANY REGULATORY AGENCIES. THE ARCHITECT HAS NO AUTHORITY TO EXERCISE ANY CONTROL OVER ANY CONSTRUCTION CONTRACTOR, OR THEIR EMPLOYEES WITH REGARD TO THEIR WORK OR ANY HEALTH OR SAFETY PRECAUTIONS.

PRODUCT APPROVAL SPECIFICATION SHEET

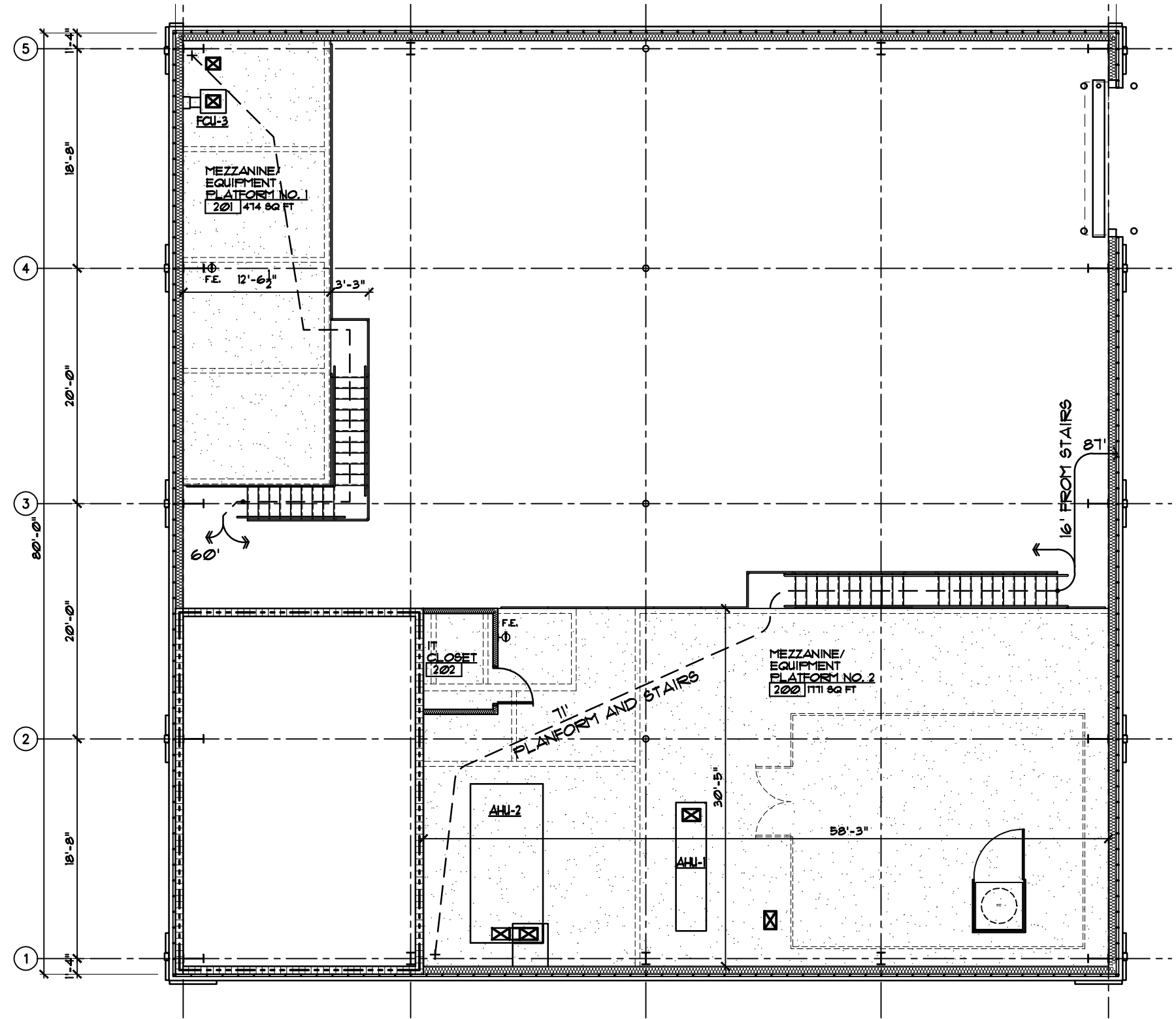
As required by Florida Statute 553.842 and Florida Administrative Code 9B-72, please provide the information and the product approval number(s) on the building components listed below if they will be utilized on the construction project for which you are applying for a building permit on or after April 1, 2004. We recommend you contact your local product supplier should you not know the product approval number for any of the applicable listed products. More information about statewide product approval can be obtained at www.floridabuilding.org

Category/Subcategory	Manufacturer	Product Description	Approval Number(s)
A. EXTERIOR DOORS			
1. Swinging (hollow metal)	BENCHMARK	HOLLOW METAL INSULATED FLUSH DOOR	FL 1197.1
2. Roll-Up Door	CORNELL IRON WORKS	INSULATED ROLL-UP DOOR	FL 11328.1
B. WINDOWS			
1. Fixed	KAWNEER	FIXED STOREFRONT WINDOWS	FL 10008.1
2. Curtain Wall	KAWNEER	1600 CURTAIN WALL	FL 11490.1
4. Doors	KAWNEER	500 DOORS	FL 10388.1
C. PANEL WALL			
1. Metal Wall Panel	CENTRIA	SUPER-RIB	FL 12228.8
D. ROOFING PRODUCTS			
1. Metal Roof	BERRIDGE MANUF.	STANDING SEAM METAL ROOF	FL 11241 R4
E. SHUTTERS			
1. NONE			



LIFE SAFETY PLAN

SCALE: 3/32" = 1'-0"



MEZZANINE/EQUIPMENT PLATFORM PLAN

SCALE: 3/32" = 1'-0"

BUILDING DESIGN SUMMARY

OWNER:

FLORIDA STATE UNIVERSITY

PROJECT LOCATION:

RESEARCH LAB
CENTER FOR ADVANCED POWER SYSTEMS
2000 LEVY AVE
FLORIDA STATE UNIVERSITY

SCOPE OF WORK:

THIS PROJECT CONSIST OF THE CONSTRUCTION OF A NEW RESEARCH LAB BUILDING FOR THE CENTER FOR ADVANCED POWER SYSTEMS LOCATED AT THE FSU RESEARCH FOUNDATION FACILITY AT 2000 LEVY ROAD. THE BUILDING IS A HIGH BAY OPEN LAB WITH 4 OFFICES, A STUDENT STUDY AREA, A HV LAB, TOILET ROOMS AND AN ELECTRICAL ROOM. AN OPEN EQUIPMENT PLATFORM WILL BE LOCATED ABOVE THE OFFICES AND THE HV LAB. THE BUILDING CONTAINS 6,189 GSF AND IS CONSTRUCTED WITH A METAL BUILDING FRAME SUPPORTING METAL ROOF PURLINS AND A METAL ROOF. THE EXTERIOR WALLS ARE CMU WITH BRICK VENEER UP TO 10'-0" AND THEN METAL WALL GIRTS AND METAL SIDING ABOVE. THE BUILDING IS ELEVATED ABOVE GRADE TO ALLOW FOR A 4'-0" HIGH LOADING DOCK.

BUILDING CODES:

APPLICABLE CODES:
FLORIDA BUILDING CODE, BUILDING (FBC-B) SIXTH EDITION (2017)
FLORIDA BUILDING CODE, ACCESSIBILITY SIXTH EDITION (2017)
FLORIDA BUILDING CODE, MECHANICAL (FBC-M) SIXTH EDITION (2017)
FLORIDA BUILDING CODE, ENERGY CONSERVATION SIXTH EDITION (2017)
FLORIDA BUILDING CODE, FUEL GAS (FBC-FG) SIXTH EDITION (2017)
FLORIDA BUILDING CODE, PLUMBING (FBC-P) SIXTH EDITION (2017)
FLORIDA BUILDING CODE, EXISTING BUILDING (FBC-EB) SIXTH EDITION (2017)
FLORIDA FIRE PREVENTION CODE (FFPC) FIFTH EDITION (2014)
NATIONAL ELECTRICAL CODE (NEC) EDITION (2014)

OCCUPANCY CLASSIFICATION:

BUSINESS OCCUPANCY - GROUP B
FBC - B - 304
NFPA 101 - CH. 38

BUILDING CONSTRUCTION CLASSIFICATION:

TYPE II B CONSTRUCTION - UNPROTECTED - UNSPRINKLERED
BUILDING SEPARATION - 2'-0" - ASSUMED PROPERTY LINE 15' 10'-0", NO FIRE RATING REQUIRED FOR EXTERIOR WALL IF 10'-0" OR OVER PER TABLE 602.
FBC - B - 602
FBC - B - TABLE 601 & 602

ALLOWABLE HEIGHTS & BUILDING AREAS:

BUILDING DESIGN BASED ON TYPE II B CONSTRUCTION.
BUILDING HEIGHT - 55'-0" MAX ALLOWED. DESIGNED: 38'-0"
BUILDING AREA - 23,000 SF, FLOOR MAX ALLOWED. DESIGNED: 6,189 GSF
NO. OF STORIES - 3 STORY MAX ALLOWED. DESIGNED: 1 STORY
MEZZANINES & EQUIPMENT PLATFORMS: (FBC-B 505.2.1)
MEZZANINE & EQUIPMENT PLATFORM NO. 1 - 414 SF
MEZZANINE & EQUIPMENT PLATFORM NO. 2 - 1,171 SF
TOTAL 2,245 DESIGNED
OPEN LAB FLOOR AREA - 3,459 SF
X 6.1 FBC 505.3.1
2,318 SF ALLOWED

OCCUPANT LOAD:

OCCUPANCY - GROUP B BUSINESS
GROUP B - 62 OCCUPANTS @ 1 PER 100 G.S.F.

MEANS OF EGRESS:

	REQUIRED	PROVIDED	
	FBC-B BUS. 200 ft.	NFFA 101 - BUS. 200 ft.	BUS. 105'-0" 10'-0"
MAX. TRAVEL DISTANCE TO EXIT	200 ft.	200 ft.	105'-0"
MAX. COMMON PATH OF TRAVEL	100 ft.	100 ft.	10'-0"
MAX. DEAD END CORRIDOR	20 ft.	20 ft.	
EGRESS WIDTH PER PERSON SERVED	02 in.	02 in.	68" SERVES 340
MIN. STAIR WIDTH (OCCUPANT LOADS LESS THAN 50)	44 in.	44 in.	-
		-	36 in.
MIN. NUMBER OF EXITS (1-500 PEOPLE)	2	2	4

FIRE PROTECTION:

FBC - B - CHAPTER 1
NFPA 101 CHAPTER 8, 9 & 38

FIRE RATED ASSEMBLIES:

FIRE RATED ASSEMBLIES SHALL BE CONSTRUCTED TO CONFORM TO THE FOLLOWING TESTED ASSEMBLIES.
FIRE RATED ASSEMBLIES:
3 HR FIRE RATED CMU UL DESIGN NO. U304
SEAL ALL PENETRATIONS IN FIRE RATED CONSTRUCTION TO MAINTAIN FIRE RESISTANT RATING OF ASSEMBLY.
ALL FIRE RATED PARTITIONS SHALL BE PERMANENTLY IDENTIFIED WITH RED LETTERED (STENCILED) SIGN ON A WHITE BACKGROUND. LETTERS SHALL BE 1/2" HIGH WITH THE FOLLOWING WORDS: "FIRE AND SMOKE BARRIER - PROTECT ALL OPENINGS." STENCILED SIGN SHALL BE ABOVE DECORATIVE CEILING AND IN CONCEALED SPACES ON EACH SIDE OF WALL AT A DISTANCE NOT TO EXCEED 20 FEET.

LIFE SAFETY AND FIRE PROTECTION LEGEND

- EXIT PRIMARY EGRESS & CAPACITY (110 PERSON CAPACITY)
- 16' TRAVEL DISTANCE (IN FEET) TO EXIT
- EXIT LIGHT. SEE LIGHTING FIXTURE SCHEDULE.
- 5 F.E. FIRE EXTINGUISHER

PARTITION LEGEND

- EXTERIOR WALL:
8" CMU W/ BITUMINOUS COATING & 1 1/2" RIGID INSULATION & BRICK VENEER W/ METAL WALL PANELS ON WALL GIRTS, INSULATION & INTERIOR METAL PANELS ABOVE.
- INTERIOR GUB PARTITION:
4" METAL STUDS (20 GA.) @ 16" O.C. W/ 3/8" GUB EACH SIDE, W/ 3 1/2" SOUND ATTENUATION BATT INSULATION (STC 49) IN ALL PARTITIONS. EXTEND GUB & INSULATION TO UNDERSIDE OF MEZZANINE ABOVE UNLESS NOTED OTHERWISE.
- INTERIOR CMU/GUB PARTITION (3HR):
8" CMU TO 20'-0" AFF. UL DESIGN NO. U307) W/ CONCRETE CEILING STRUCTURE ABOVE.
- BRACKET MOUNTED FIRE EXTINGUISHER:
FIRE EXTINGUISHER SHALL BE UL-RATED 4-A-60, B, C, 10 lb NOMINAL.

Hicks Nation Architects Incorporated

Architecture
Programming
Planning

1382
Timberlane Road
Suite C
Tallahassee FL
32312
850.893.1130
License Number
AA C00 1403

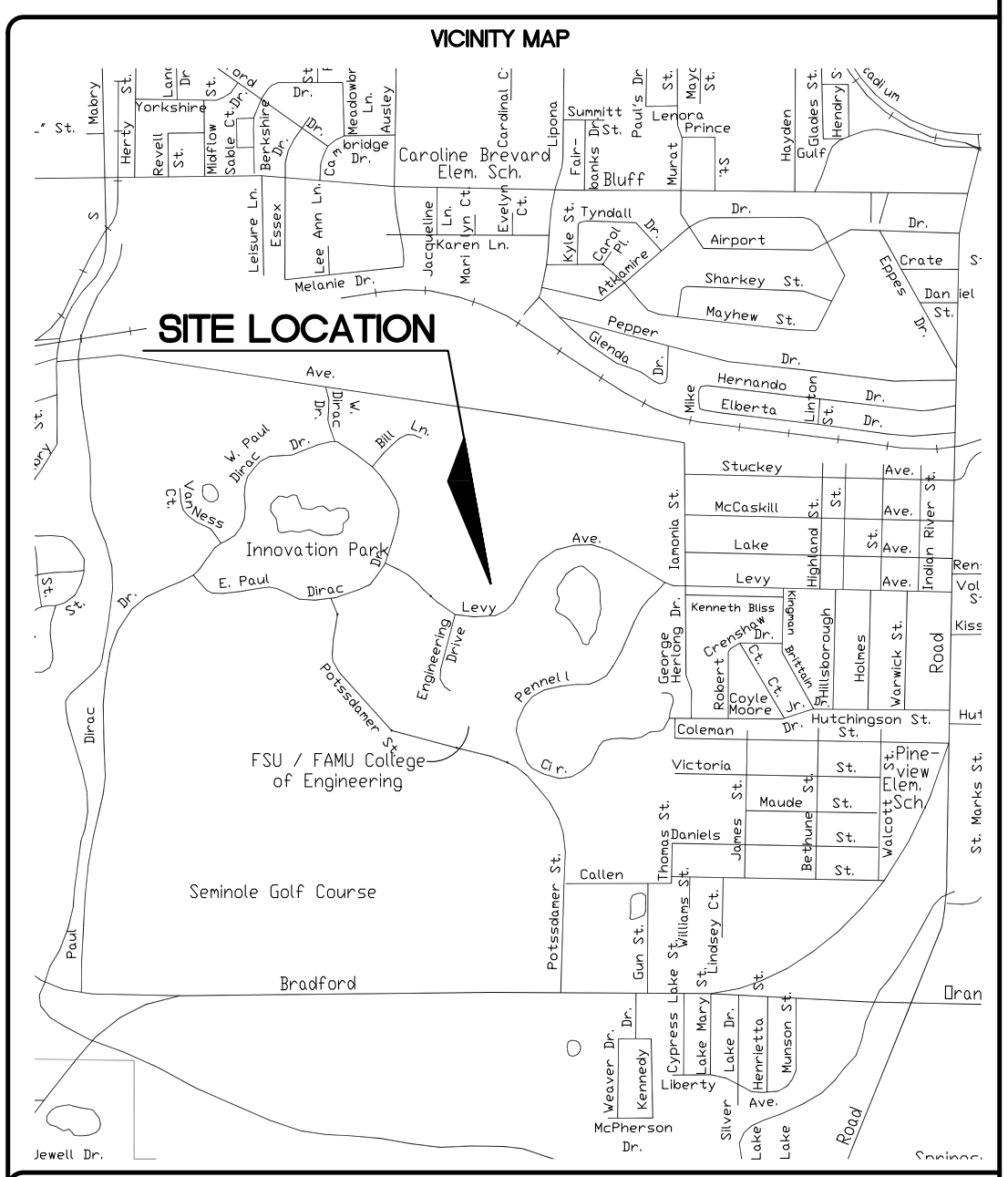
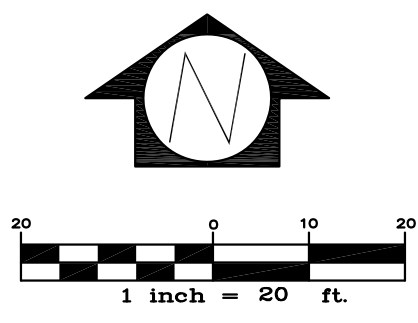
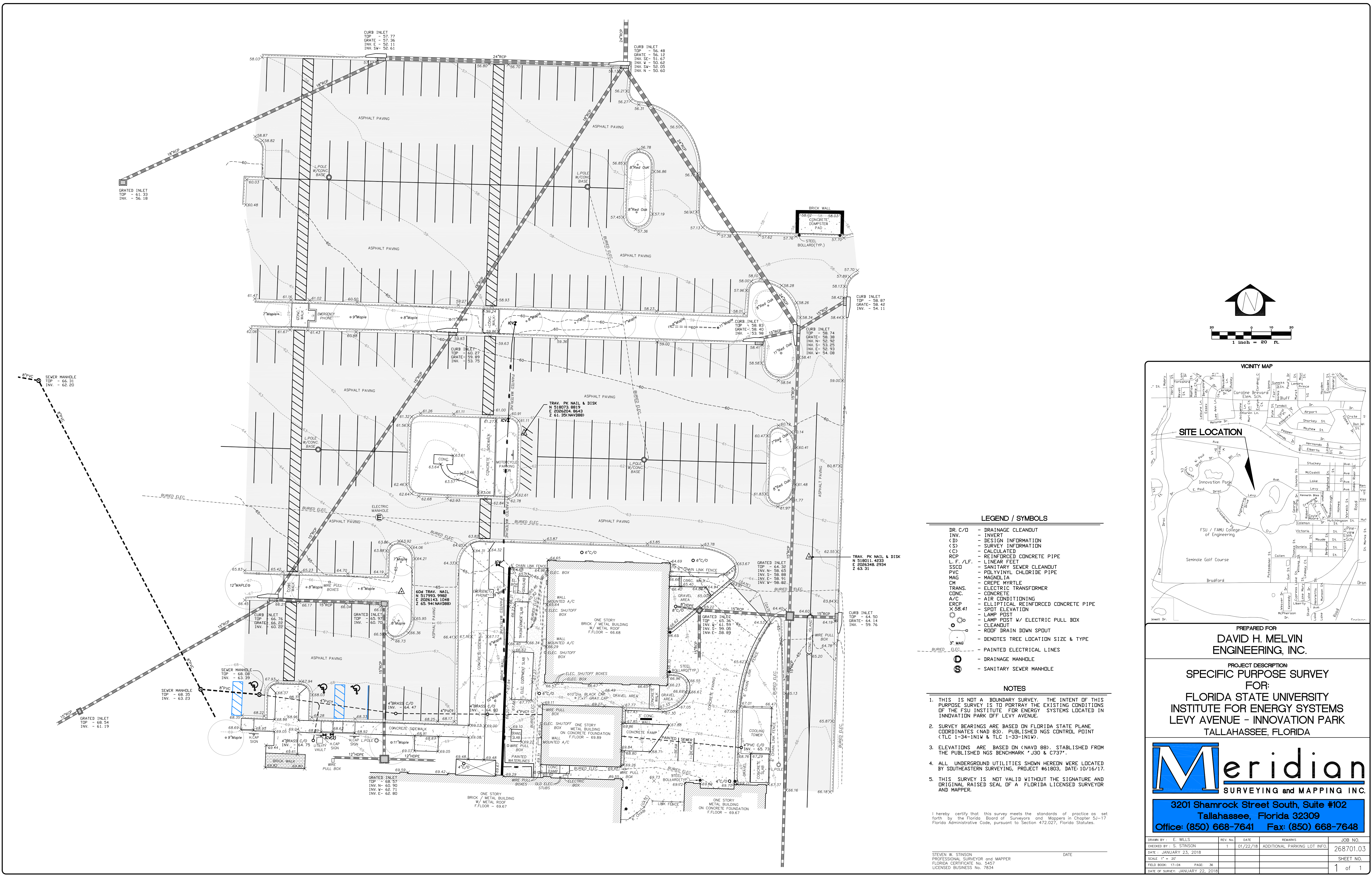
RESEARCH BUILDING
CENTER FOR ADVANCED POWER SYSTEMS
FSU PROJECT NO. 1800035
FLORIDA STATE UNIVERSITY

BUILDING DESIGN SUMMARY, GENERAL NOTES & LIFE SAFETY PLAN

Jordan W. Nidrean
AR 12378

DATE
JULY 6, 2018
PROJECT NO.
1708
DESIGNED BY
JWN
DRAWN BY
JTM
CHECKED BY
JWN
DWG. NO.
G1.2

SHEET OF



- LEGEND / SYMBOLS**
- DR. C/O - DRAINAGE CLEANOUT
 - INV. - INVERT
 - CD - DESIGN INFORMATION
 - CS - SURVEY INFORMATION
 - CD - CALCULATED
 - RCP - REINFORCED CONCRETE PIPE
 - L.F./L.F. - LINEAR FEET
 - SSCO - SANITARY SEWER CLEANOUT
 - PVC - POLYVINYL CHLORIDE PIPE
 - MAG - MAGNOLIA
 - CM - CREPE MYRTLE
 - TRANS. - ELECTRIC TRANSFORMER
 - CONC. - CONCRETE
 - A/C - AIR CONDITIONING
 - ERCP - ELLIPTICAL REINFORCED CONCRETE PIPE
 - X 58.41 - SPOT ELEVATION
 - LAMP POST - LAMP POST
 - LAMP POST W/ ELECTRIC PULL BOX - LAMP POST W/ ELECTRIC PULL BOX
 - CLEANOUT - CLEANOUT
 - ROOF DRAIN DOWN SPOUT - ROOF DRAIN DOWN SPOUT
 - DENOTES TREE LOCATION SIZE & TYPE - DENOTES TREE LOCATION SIZE & TYPE
 - PAINTED ELECTRICAL LINES - PAINTED ELECTRICAL LINES
 - DRAINAGE MANHOLE - DRAINAGE MANHOLE
 - SANITARY SEWER MANHOLE - SANITARY SEWER MANHOLE

- NOTES**
- THIS IS NOT A BOUNDARY SURVEY. THE INTENT OF THIS PURPOSE SURVEY IS TO PORTRAY THE EXISTING CONDITIONS OF THE FSU INSTITUTE FOR ENERGY SYSTEMS LOCATED IN INNOVATION PARK OFF LEVY AVENUE.
 - SURVEY BEARINGS ARE BASED ON FLORIDA STATE PLANE COORDINATES (NAD 83). PUBLISHED NGS CONTROL POINT (TLC 1-34-IN1W & TLC 1-33-IN1W).
 - ELEVATIONS ARE BASED ON (NAVD 88), ESTABLISHED FROM THE PUBLISHED NGS BENCHMARK *J30 & C737*.
 - ALL UNDERGROUND UTILITIES SHOWN HEREIN WERE LOCATED BY SOUTHEASTERN SURVEYING, PROJECT #61803, DATE 10/16/17.
 - THIS SURVEY IS NOT VALID WITHOUT THE SIGNATURE AND ORIGINAL SEALED SEAL OF A FLORIDA LICENSED SURVEYOR AND MAPPER.

I hereby certify that this survey meets the standards of practice as set forth by the Florida Board of Surveyors and Mappers in Chapter 5J-17 Florida Administrative Code, pursuant to Section 472.027, Florida Statutes.

STEVEN W. STINSON
PROFESSIONAL SURVEYOR AND MAPPER
FLORIDA CERTIFICATE NO. 3457
LICENSED BUSINESS NO. 7834

PREPARED FOR:
**DAVID H. MELVIN
ENGINEERING, INC.**

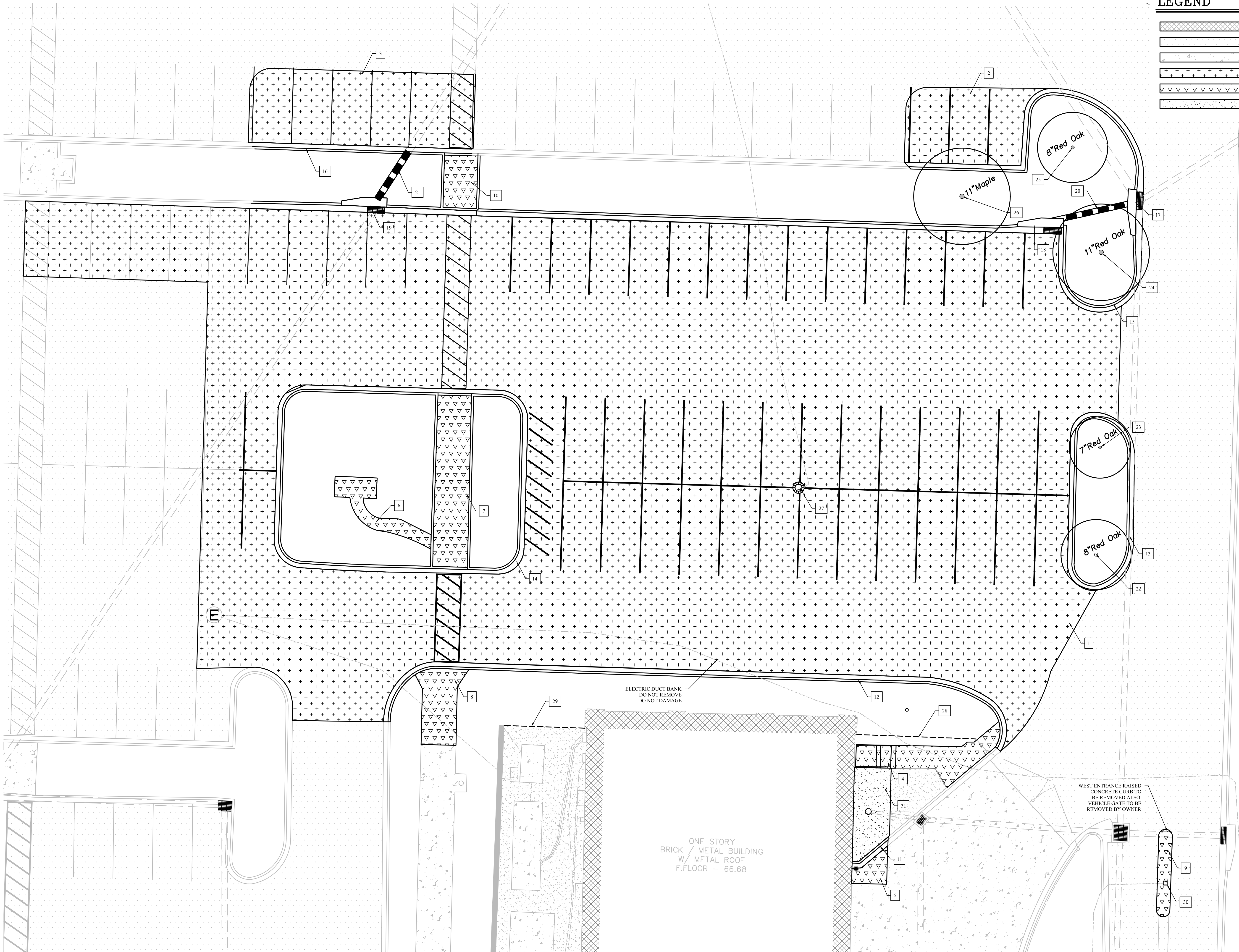
PROJECT DESCRIPTION:
**SPECIFIC PURPOSE SURVEY
FOR:
FLORIDA STATE UNIVERSITY
INSTITUTE FOR ENERGY SYSTEMS
LEVY AVENUE - INNOVATION PARK
TALLAHASSEE, FLORIDA**

Meridian
SURVEYING AND MAPPING INC.

**3201 Shamrock Street South, Suite #102
Tallahassee, Florida 32309
Office: (850) 668-7641 Fax: (850) 668-7648**

DRAWN BY :	REV. NO.	DATE	REMARKS	JOB NO.
CHECKED BY : S. STINSON	1	01/22/18	ADDITIONAL PARKING LOT INFO.	268701.03
DATE : JANUARY 23, 2018				
SCALE 1" = 20'				SHEET NO.
FIELD BOOK: 17-04	PAGE: 36			1 of 1
DATE OF SURVEY: JANUARY 22, 2018				

THESE DRAWINGS AND RENDERINGS ARE INSTRUMENTS OF SERVICE. THE DRAWINGS AND COPIES THEREOF, INCLUDING ELECTRONIC MEDIA AND CAD FILES, ARE THE PROPERTY OF HICKS NATION ARCHITECT, INC. THEIR USE, REPRESENTATION OR REPRODUCTION IN ANY FORM OR CONTENT BY ANY PERSON OR FIRM OTHER THAN HICKS NATION ARCHITECT, INC. IS PROHIBITED EXCEPT BY WRITTEN AGREEMENT WITH THE ARCHITECT. THIS COPYRIGHT NOTIFICATION SHALL BE TRUE AS IF DIRECTLY PLACED ON EACH DRAWING EXHIBIT OR RENDERING ON THIS DOCUMENT AND SHALL NOT BE REMOVED FROM THESE DOCUMENTS. JERRY L. HICKS, COPYRIGHT © 2018



LEGEND

	EXISTING BUILDING
	EXISTING ASPHALT
	EXISTING CONCRETE
	ASPHALT TO BE REMOVED
	CONCRETE TO BE REMOVED
	GRAVEL TO BE REMOVED



DEMOLITION NOTES

1	REMOVE 19,336 SF ASPHALT PAVEMENT
2	REMOVE 472 SF ASPHALT PAVEMENT
3	REMOVE 863 SF ASPHALT PAVEMENT
4	REMOVE 188 SF CONCRETE SIDEWALK & HANDRAILS
5	REMOVE 44 SF CONCRETE SIDEWALK
6	REMOVE 108 SF CONCRETE SIDEWALK
7	REMOVE 306 SF CONCRETE SIDEWALK
8	REMOVE 147 SF CONCRETE SIDEWALK
9	REMOVE 60 SF RAISED CONCRETE CURB
10	REMOVE 92 SF CONCRETE SIDEWALK
11	REMOVE 10 LF CURB & GUTTER
12	REMOVE 157 LF CURB & GUTTER
13	REMOVE 91 LF CURB & GUTTER
14	REMOVE 172 LF CURB & GUTTER
15	REMOVE 325 LF CURB & GUTTER
16	REMOVE 52 LF CURB & GUTTER
17	REMOVE CURB INLET TOP
18	REMOVE CURB INLET TOP & BOTTOM
19	REMOVE CURB INLET TOP & BOTTOM
20	REMOVE 17 LF 15\" RCP
21	REMOVE 13 LF 18\" RCP
22	REMOVE 8\" RED OAK
23	REMOVE 7\" RED OAK
24	REMOVE 11\" RED OAK
25	REMOVE 8\" RED OAK
26	REMOVE 11\" MAPLE
27	REMOVE LIGHT POLE & WIRE
28	REMOVE 28 LF CHAIN LINK FENCE
29	REMOVE 19 LF CHAIN LINK FENCE
30	VEHICLE GATE TO BE REMOVED BY OWNER
31	REMOVE 160 SF GRAVEL

DAVID H. MELVIN, INC.
Consulting Engineers

EB-0005637

2541-1 BARRINGTON CIRCLE
TALLAHASSEE, FLORIDA 32308
850-671-7221

DEMOLITION PLAN
SCALE 1\"/>

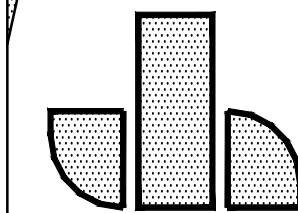
NO. DATE REVISION

Hicks
Nation
Architects
Incorporated

Architecture
Programming
Planning

1382
Timberlane Road
Suite C
Tallahassee FL
32312
850.893.1130
License Number
AA C00 1403

RESEARCH BUILDING
CENTER FOR ADVANCED POWER SYSTEMS
FSU PROJECT NO. 1800035
FLORIDA STATE UNIVERSITY
DEMOLITION PLAN



John W. Nation
AR 12778

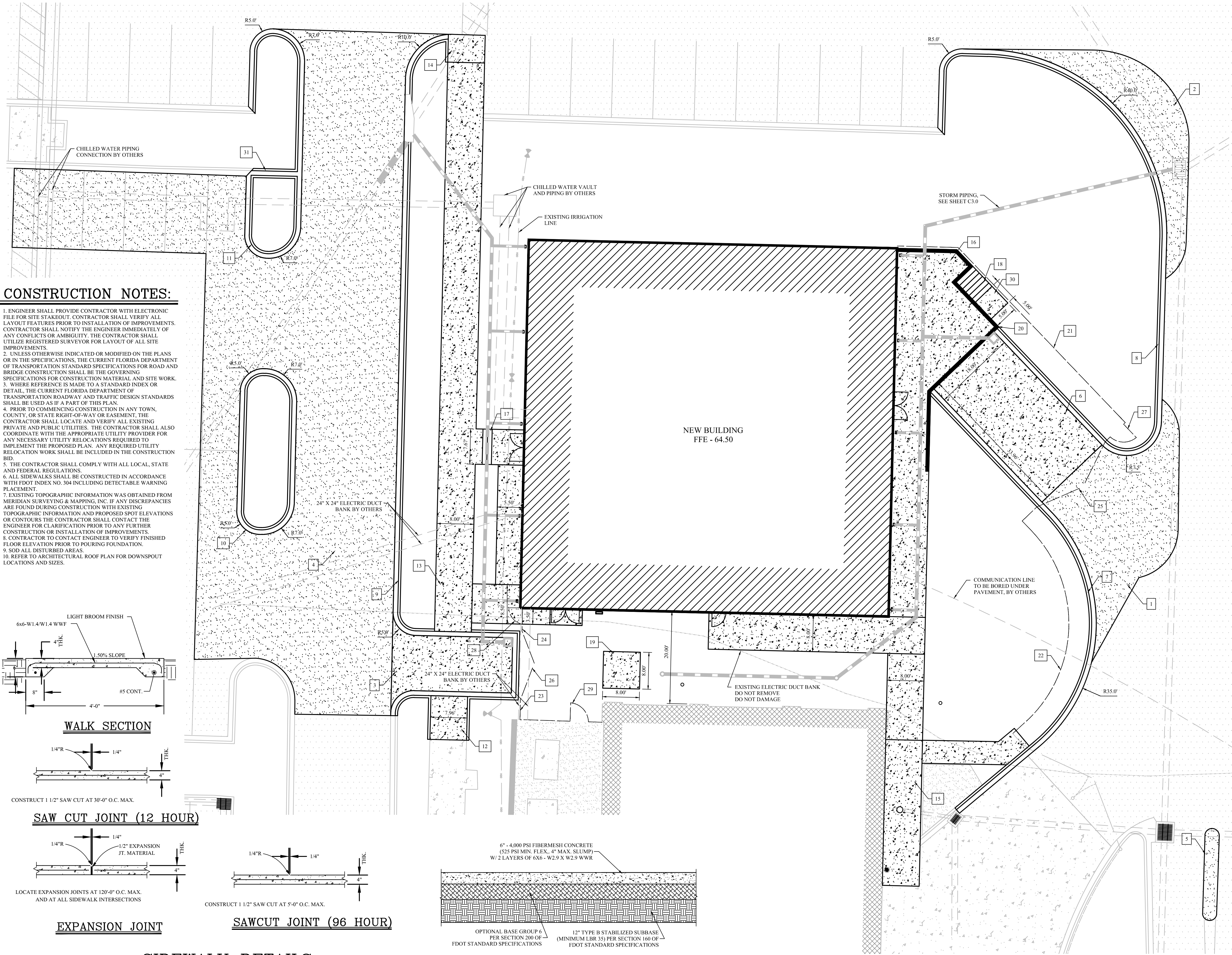
DATE
JULY 6, 2018
PROJECT NO.
1708
DESIGNED BY
JWN
DRAWN BY

CHECKED BY
JWN
DWG. NO.

C1.1

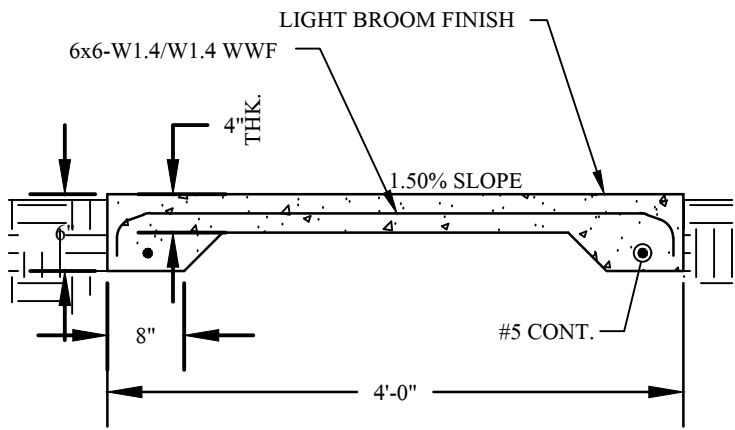
SHEET OF

THESE DRAWINGS AND RENDERINGS ARE INSTRUMENTS OF SERVICE. THE DRAWINGS AND COPIES THEREOF, INCLUDING ELECTRONIC MEDIA AND CAD FILES, ARE THE PROPERTY OF HICKS NATION ARCHITECT, INC. THEIR USE, REPRESENTATION OR REPRODUCTION IN ANY FORM OR CONTENT BY ANY PERSON OR ENTITY WITHOUT THE WRITTEN AGREEMENT OF HICKS NATION ARCHITECT, INC. IS PROHIBITED. THIS COPYRIGHT NOTIFICATION SHALL BE TRUE AS IF DIRECTLY PLACED ON EACH DRAWING EXHIBIT OR RENDERING ON THIS DOCUMENT AND SHALL NOT BE REMOVED FROM THESE DOCUMENTS. HICKS NATION ARCHITECT, INC. 2024

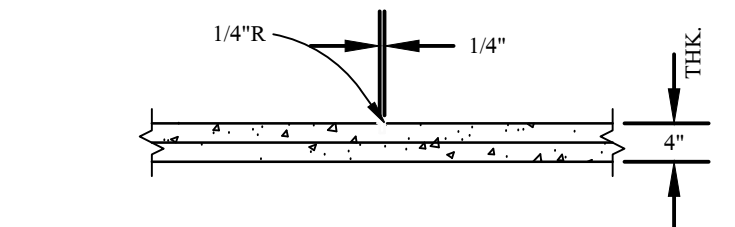


CONSTRUCTION NOTES:

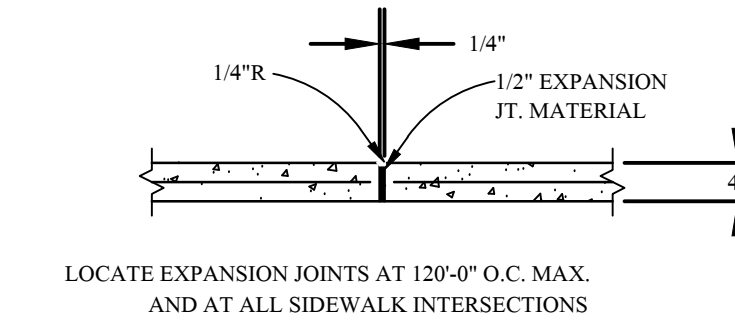
- ENGINEER SHALL PROVIDE CONTRACTOR WITH ELECTRONIC FILE FOR SITE STAKEOUT. CONTRACTOR SHALL VERIFY ALL LAYOUT FEATURES PRIOR TO INSTALLATION OF IMPROVEMENTS. CONTRACTOR SHALL NOTIFY THE ENGINEER IMMEDIATELY OF ANY CONFLICTS OR AMBIGUITY. THE CONTRACTOR SHALL UTILIZE REGISTERED SURVEYOR FOR LAYOUT OF ALL SITE IMPROVEMENTS.
- UNLESS OTHERWISE INDICATED OR MODIFIED ON THE PLANS OR IN THE SPECIFICATIONS, THE CURRENT FLORIDA DEPARTMENT OF TRANSPORTATION STANDARD SPECIFICATIONS FOR ROAD AND BRIDGE CONSTRUCTION SHALL BE THE GOVERNING SPECIFICATIONS FOR CONSTRUCTION MATERIAL AND SITE WORK.
- WHERE REFERENCE IS MADE TO A STANDARD INDEX OR DETAIL, THE CURRENT FLORIDA DEPARTMENT OF TRANSPORTATION ROADWAY AND TRAFFIC DESIGN STANDARDS SHALL BE USED AS IF A PART OF THIS PLAN.
- PRIOR TO COMMENCING CONSTRUCTION IN ANY TOWN, COUNTY, OR STATE RIGHT-OF-WAY OR EASEMENT, THE CONTRACTOR SHALL LOCATE AND VERIFY ALL EXISTING PRIVATE AND PUBLIC UTILITIES. THE CONTRACTOR SHALL ALSO COORDINATE WITH THE APPROPRIATE UTILITY PROVIDER FOR ANY NECESSARY UTILITY RELOCATION'S REQUIRED TO IMPLEMENT THE PROPOSED PLAN. ANY REQUIRED UTILITY RELOCATION WORK SHALL BE INCLUDED IN THE CONSTRUCTION BID.
- THE CONTRACTOR SHALL COMPLY WITH ALL LOCAL, STATE AND FEDERAL REGULATIONS.
- ALL SIDEWALKS SHALL BE CONSTRUCTED IN ACCORDANCE WITH FOOT INDEX NO. 304 INCLUDING DETECTABLE WARNING PLACEMENT.
- EXISTING TOPOGRAPHIC INFORMATION WAS OBTAINED FROM MERIDIAN SURVEYING & MAPPING, INC. IF ANY DISCREPANCIES ARE FOUND DURING CONSTRUCTION WITH EXISTING TOPOGRAPHIC INFORMATION AND PROPOSED SPOT ELEVATIONS OR CONTOURS THE CONTRACTOR SHALL CONTACT THE ENGINEER FOR CLARIFICATION PRIOR TO ANY FURTHER CONSTRUCTION OR INSTALLATION OF IMPROVEMENTS.
- CONTRACTOR TO CONTACT ENGINEER TO VERIFY FINISHED FLOOR ELEVATION PRIOR TO POURING FOUNDATION.
- SOD ALL DISTURBED AREAS.
- REFER TO ARCHITECTURAL ROOF PLAN FOR DOWNSPOUT LOCATIONS AND SIZES.



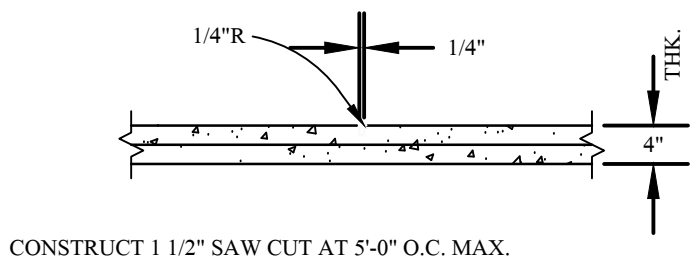
WALK SECTION



SAW CUT JOINT (12 HOUR)



EXPANSION JOINT

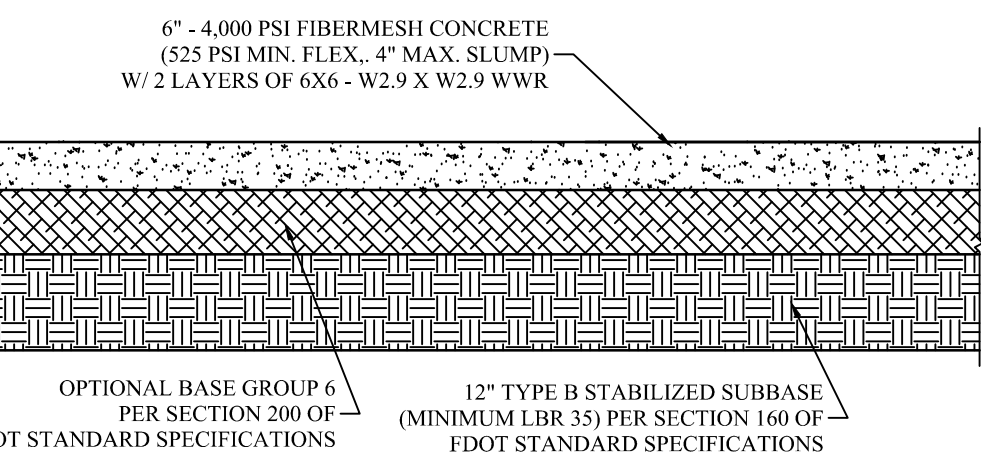


SAWCUT JOINT (96 HOUR)

SIDEWALK DETAILS

C
C2.0

NTS

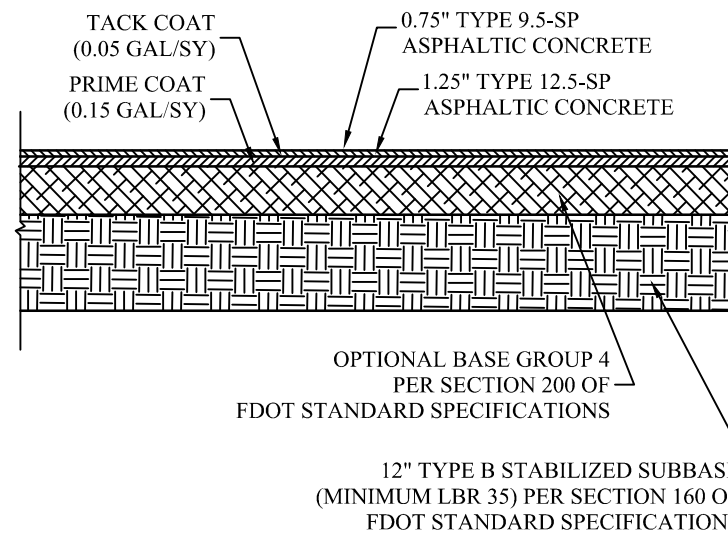
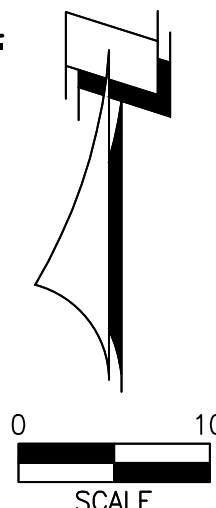
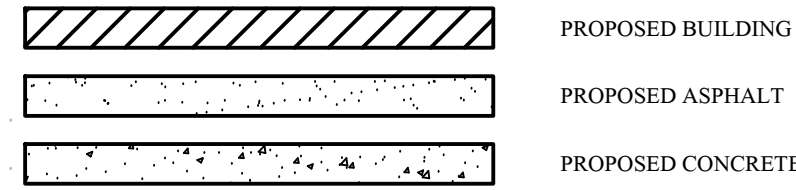


CONCRETE PAVEMENT DETAIL

B
C2.0

NTS

LEGEND



ASPHALT PAVING DETAIL

A
C2.0

NTS

SITE DATA

General Information

Property Tax ID #(s):	410327 C0010
Site Address:	2000 Levy Avenue
Owner:	FSU Board of Trustees
Architect:	Hicks Nation Architects, Inc.
Engineer:	David H. Melvin, Inc.
Surveyor:	Meridian Surveying and Mapping, Inc.
Utilities:	
Water	City of Tallahassee
Sewer	City of Tallahassee
Electric	City of Tallahassee
Zoning:	PUD 13
Existing Use(s)	8600 - County
Proposed Use(s)	8600 - County

Area Data

Demolished Impervious Area (SF):	22987 SF
Asphalt:	20671 SF
Concrete:	2156 SF
Gravel:	160 SF
Proposed Impervious Area (SF):	18551 SF
Building(s) Footprint:	6400 SF
Asphalt:	6854 SF
Concrete:	5297 SF
Post-Development Net Decrease in Impervious Area (SF):	4436 SF

SITE NOTES

1	INSTALL 749 SF ASPHALT PER DETAIL A/C2.0
2	INSTALL 468 SF ASPHALT PER DETAIL A/C2.0
3	INSTALL 324 SF CONCRETE PAVEMENT PER DETAIL B/C2.0
4	INSTALL 5,577 SF ASPHALT PER DETAIL A/C2.0
5	INSTALL 60 SF ASPHALT PER DETAIL A/C2.0
6	INSTALL 611 SF CONCRETE PAVEMENT PER DETAIL B/C2.0
7	INSTALL 115 LF 18" TYPE F CURB & GUTTER PER FDOT STD. INDEX NO. 300
8	INSTALL 174 LF 18" TYPE F CURB & GUTTER PER FDOT STD. INDEX NO. 300
9	INSTALL 209 LF 18" TYPE F CURB & GUTTER PER FDOT STD. INDEX NO. 300
10	INSTALL 80 LF 18" TYPE F CURB & GUTTER PER FDOT STD. INDEX NO. 300
11	INSTALL 94 LF 18" TYPE F CURB & GUTTER PER FDOT STD. INDEX NO. 300
12	INSTALL 76 SF CONCRETE TYPE CR-E CURB RAMP PER FDOT STD. INDEX NO. 304
13	INSTALL 1,334 SF CONCRETE SIDEWALK PER DETAIL C/C2.0
14	INSTALL 76 SF CONCRETE TYPE CR-F CURB RAMP PER FDOT STD. INDEX NO. 304
15	INSTALL 1,310 SF CONCRETE SIDEWALK PER DETAIL C/C2.0
16	INSTALL 494 SF CONCRETE LOADING DOCK, SEE STRUCTURAL
17	INSTALL CONCRETE STAIRS, SEE STRUCTURAL
18	INSTALL CONCRETE STAIRS, SEE STRUCTURAL
19	INSTALL 64 SF CONCRETE PAD PER DETAIL C/C2.0
20	INSTALL 74 LF RETAINING WALL, SEE STRUCTURAL
21	INSTALL 72 LF 6" BLACK VINYL CHAIN LINK FENCE
22	INSTALL 58 LF 6" BLACK VINYL CHAIN LINK FENCE
23	INSTALL 4 LF 6" BLACK VINYL CHAIN LINK FENCE
24	INSTALL 5 LF 6" BLACK VINYL CHAIN LINK FENCE
25	INSTALL DOUBLE 6" TALL 6" WIDE BLACK VINYL CHAIN LINK FENCE GATE
26	INSTALL DOUBLE 6" TALL 6" WIDE BLACK VINYL CHAIN LINK FENCE GATE
27	INSTALL 6" TALL 4" WIDE BLACK VINYL CHAIN LINK FENCE GATE
28	INSTALL 6" TALL 3" WIDE BLACK VINYL CHAIN LINK FENCE GATE
29	INSTALL 6" TALL 4" WIDE BLACK VINYL CHAIN LINK FENCE GATE
30	INSTALL 25 SF CONCRETE SIDEWALK PER DETAIL C/C2.0
31	INSTALL 12 LF 18" DOUBLE SIDED TYPE F CURB & GUTTER PER FDOT STD. INDEX NO. 300 TO CREATE A 12" WIDE FLUME THROUGH THE ISLAND

DAVID H. MELVIN, INC.
Consulting Engineers

EB-0005637

2541-1 BARRINGTON CIRCLE
TALLAHASSEE, FLORIDA 32308
850-671-7221

SITE PLAN

SCALE 1"=10'-0"

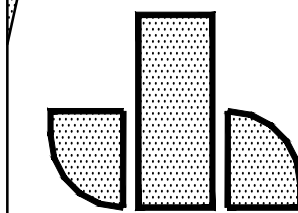
NO DATE REVISION

Hicks Nation
Architects
Incorporated

Architecture
Programming
Planning

1382
Timberlane Road
Suite C
Tallahassee FL
32312
850.893.1130
License Number
AA C00 1403

RESEARCH BUILDING
CENTER FOR ADVANCED POWER SYSTEMS
FSU PROJECT NO. 1800035
FLORIDA STATE UNIVERSITY
SITE PLAN



John W. Nation
AR 12778

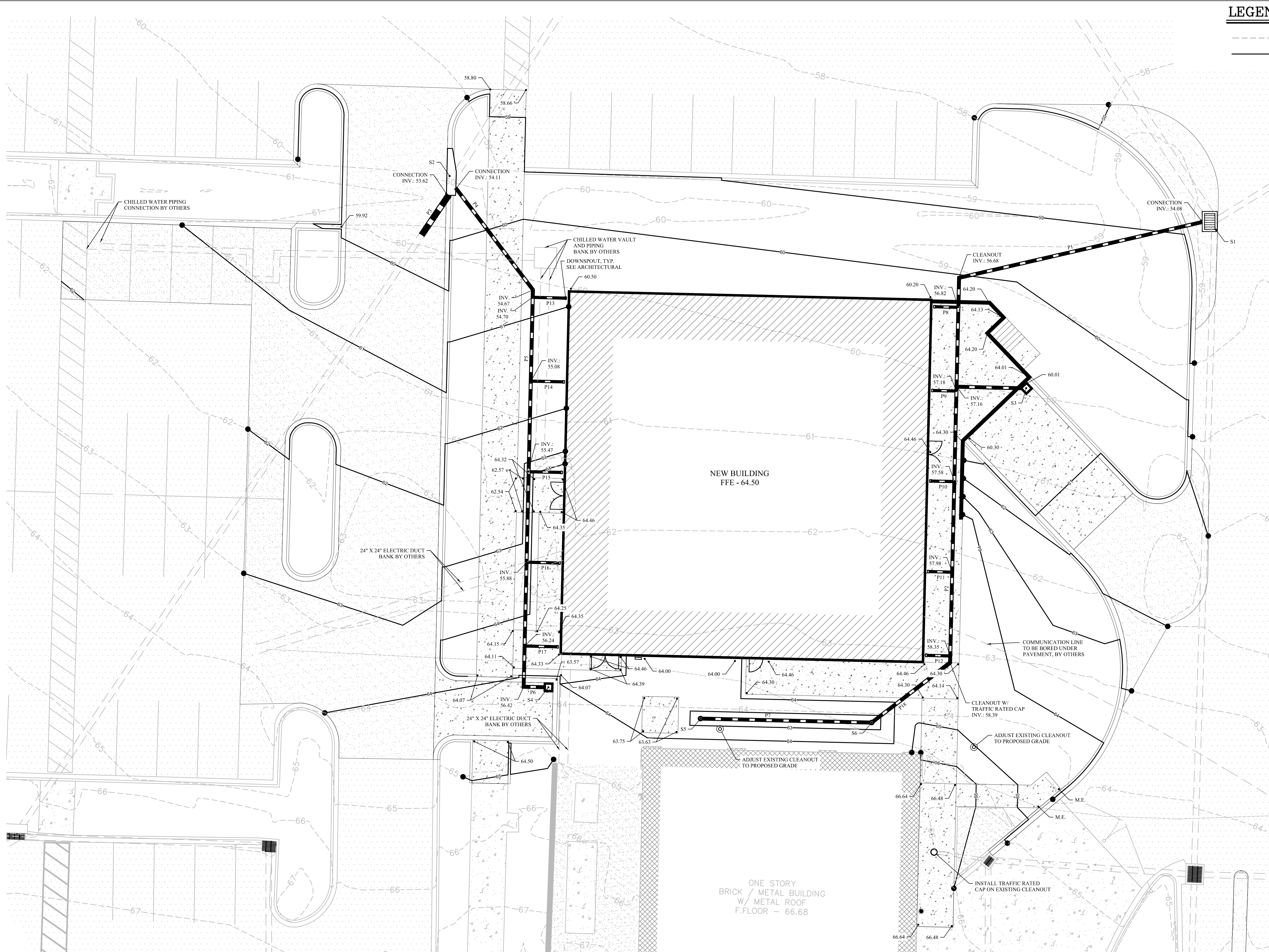
DATE
JULY 6, 2018
PROJECT NO.
1708
DESIGNED BY
JWN
DRAWN BY

CHECKED BY
JWN
DWG. NO.

C2.0

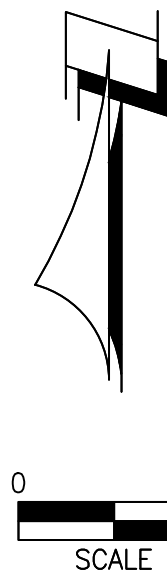
SHEET OF

THESE DRAWINGS AND RENDERINGS ARE INSTRUMENTS OF SERVICE. THE DRAWINGS AND COPIES THEREOF, INCLUDING ELECTRONIC MEDIA AND CAD FILES, ARE THE PROPERTY OF HICKS NATION ARCHITECT, INC. THEIR USE, REPRESENTATION OR REPRODUCTION IN ANY FORM OR CONTENT BY ANY OTHER PERSON OR ENTITY WITHOUT THE WRITTEN PERMISSION OF HICKS NATION ARCHITECT, INC. IS PROHIBITED. THIS COPYRIGHT NOTIFICATION SHALL BE TRUE AS IF DIRECTLY PLACED ON EACH DRAWING EXHIBIT OR RENDERING ON THIS DOCUMENT AND SHALL NOT BE REMOVED FROM THESE DOCUMENTS. JERRY L. HICKS, COPYRIGHT © 2018



LEGEND

--- EXISTING CONTOUR
--- PROPOSED CONTOUR



STRUCTURE CHART			
STRUCTURE	DESCRIPTION	TOP	INVERT
S1	TYPE C DBI FDOT STD. INDEX NO. 323	58.36	-
S2	TYPE S CURB INLET W/ P BOTTOM FDOT STD. INDEX NO. 200	59.73 (58.90 THROAT)	53.62
S3	24" NYLOPLAST HD DRAIN BASIN W/ 2X2 HEAVY DUTY GRATE	60.00	57.47
S4	24" NYLOPLAST HD DRAIN BASIN W/ 2X2 HEAVY DUTY GRATE	63.55	56.65
S5	12" NYLOPLAST HD DRAIN BASIN W/ STANDARD GRATE	62.50	59.58
S6	12" NYLOPLAST HD DRAIN BASIN W/ STANDARD GRATE	62.50	58.82

PIPE CHART		
PIPE	LENGTH (LF)	DESCRIPTION
P1	55	8" ADS N-12
P2	85	8" ADS N-12
P3	11	12" ADS N-12
P4	28	8" ADS N-12
P5	88	8" ADS N-12
P6	5	8" ADS N-12
P7	37	8" ADS N-12
P8	6	6" ADS N-12
P9	6	6" ADS N-12
P10	6	6" ADS N-12
P11	6	6" ADS N-12
P12	6	6" ADS N-12
P13	8	6" ADS N-12
P14	8	6" ADS N-12
P15	8	6" ADS N-12
P16	8	6" ADS N-12
P17	8	6" ADS N-12
P18	22	8" ADS N-12

DAVID H. MELVIN, INC.
Consulting Engineers

EB-0005637
2541-1 BARRINGTON CIRCLE
TALLAHASSEE, FLORIDA 32308
850-671-7221

GRADING & DRAINAGE PLAN
SCALE 1"=10'-0"

Hicks Nation
Architects
Incorporated
Architecture
Programming
Planning
1382
Timberlane Road
Suite C
Tallahassee FL
32312
850.893.1130
License Number
AA C00 1403

RESEARCH BUILDING
CENTER FOR ADVANCED POWER SYSTEMS
FSU PROJECT NO. 1800035
FLORIDA STATE UNIVERSITY
GRADING & DRAINAGE PLAN

John W. Nation
AR 12778

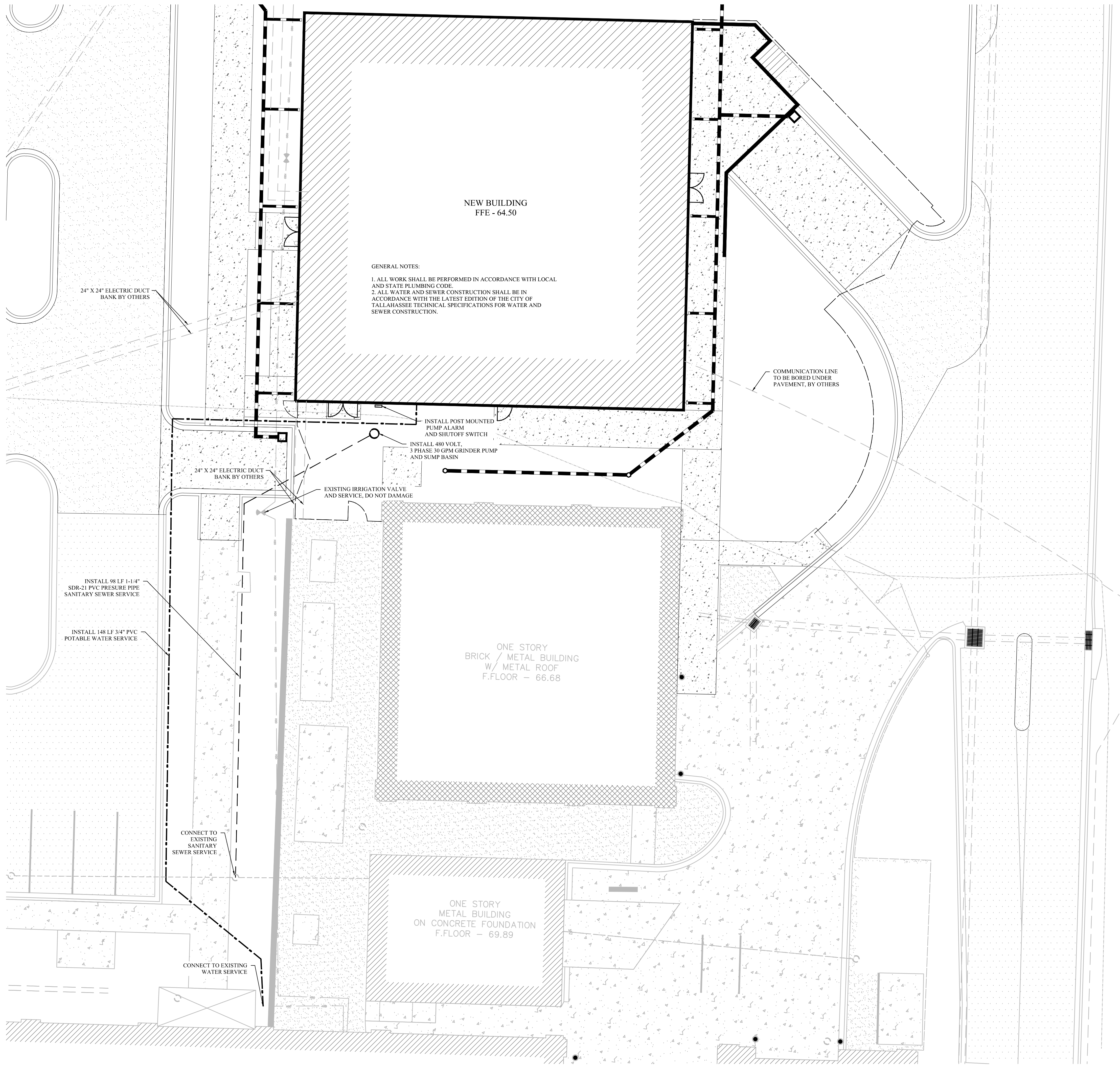
DATE
JULY 6, 2018
PROJECT NO.
1708
DESIGNED BY
JWN
DRAWN BY

CHECKED BY
JWN
DWG. NO.

C3.0

SHEET OF

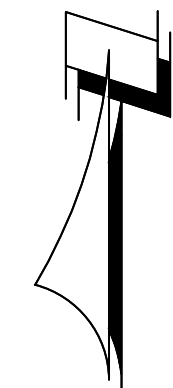
THESE DRAWINGS AND RENDERINGS ARE INSTRUMENTS OF SERVICE. THE DRAWINGS AND COPIES THEREOF, INCLUDING ELECTRONIC MEDIA AND CAD FILES, ARE THE PROPERTY OF HICKS NATION ARCHITECT, INC. THEIR USE, REPRESENTATION OR REPRODUCTION IN ANY FORM OR CONTENT BY ANY OTHER PERSON OR ENTITY WITHOUT THE WRITTEN PERMISSION OF HICKS NATION ARCHITECT, INC. IS PROHIBITED. THIS COPYRIGHT NOTIFICATION SHALL BE TRUE AS IF DIRECTLY PLACED ON EACH DRAWING EXHIBIT OR RENDERING ON THIS DOCUMENT AND SHALL NOT BE REMOVED FROM THESE DOCUMENTS. HICKS NATION ARCHITECT, INC. COPYRIGHT © 2018



UTILITY PLAN
SCALE: 1"=10'-0"

LEGEND

- EXISTING SANITARY SERVICE
- EXISTING WATER SERVICE
- PROPOSED SANITARY SERVICE
- PROPOSED WATER SERVICE



0 10
SCALE

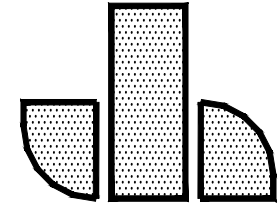
DAVID H. MELVIN, INC.
Consulting Engineers

EB-0005637
2541-1 BARRINGTON CIRCLE
TALLAHASSEE, FLORIDA 32308
850-671-7221

NO.	DATE	REVISION

Hicks Nation Architects Incorporated
Architecture
Programming
Planning
1382
Timberlane Road
Suite C
Tallahassee FL
32312
850.893.1130
License Number
AA C00 1403

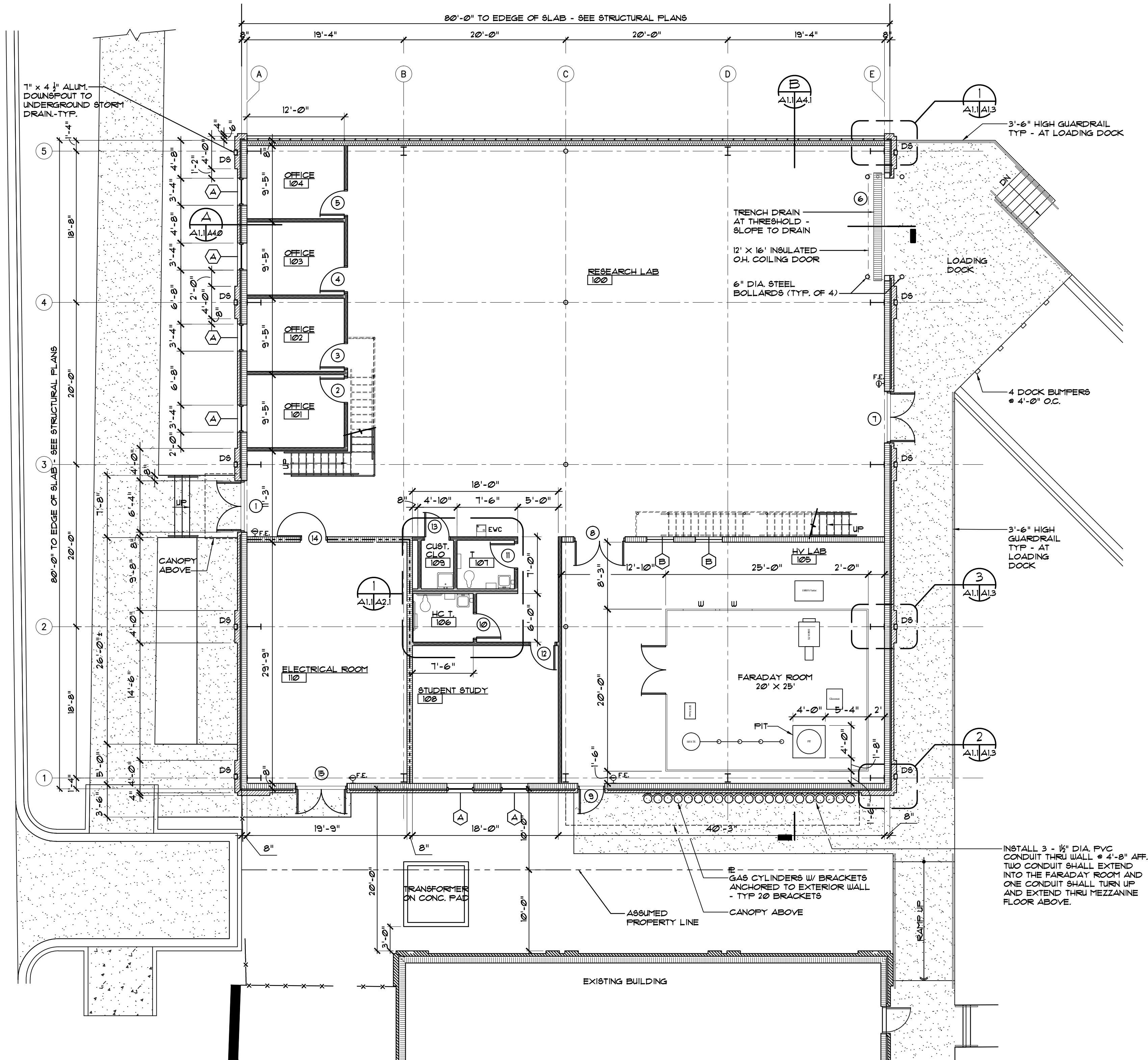
**RESEARCH BUILDING
CENTER FOR ADVANCED POWER SYSTEMS**
FSU PROJECT NO. 1800035
FLORIDA STATE UNIVERSITY
UTILITY PLAN


John W. Nation
AR 12778

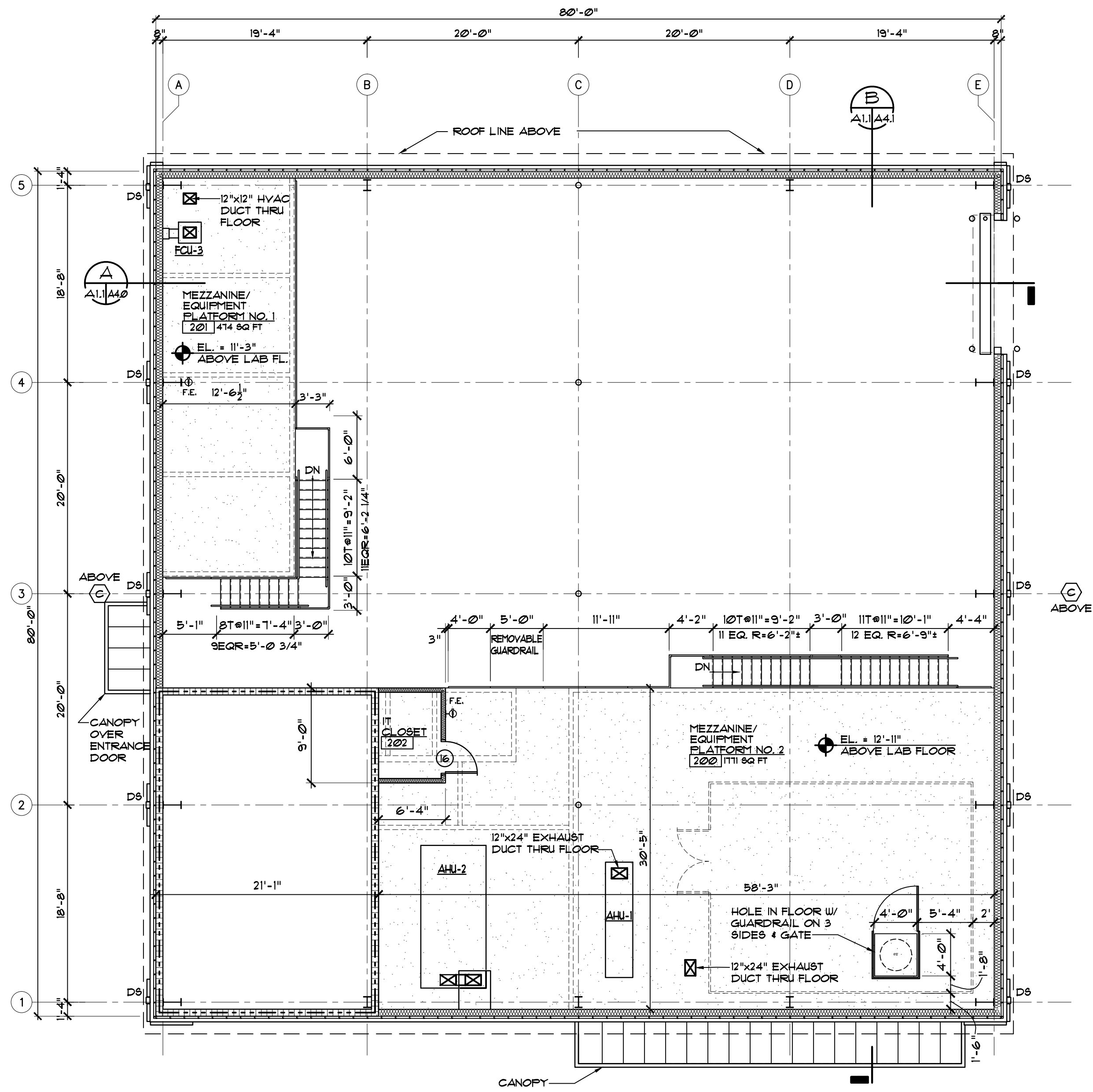
DATE
JULY 6, 2018
PROJECT NO.
1708
DESIGNED BY
JWN
DRAWN BY
JWN
CHECKED BY
JWN
DWG. NO.
C4.0

SHEET OF

THESE DRAWINGS AND RENDERINGS ARE INSTRUMENTS OF SERVICE. THE DRAWINGS AND COPIES THEREOF, INCLUDING ELECTRONIC MEDIA AND CAD FILES ARE THE PROPERTY OF HICKS NATION ARCHITECT, INC. THEIR USE, REPRESENTATION OR REPRODUCTION IN ANY FORM OR CONTENT BY ANY OTHER PERSON OR ENTITY WITHOUT THE WRITTEN PERMISSION OF HICKS NATION ARCHITECT, INC. IS PROHIBITED. THIS COPYRIGHT NOTIFICATION SHALL BE TRUE AS IF DIRECTLY PLACED ON EACH DRAWING EXHIBIT OR RENOVING ON THIS DOCUMENT AND SHALL NOT BE REMOVED FROM THESE DOCUMENTS. JOHN W. NATION COPYRIGHT © 2022



FLOOR PLAN
SCALE: 1/8"=1'-0"



MEZZANINE/EQUIPMENT PLATFORM PLAN
SCALE: 1/8"=1'-0"



PARTITION LEGEND

- EXTERIOR WALL:
8" CMU W/ BITUMINOUS COATING & 1 1/2" RIGID INSULATION & BRICK VENEER W/ METAL WALL PANELS ON WALL GIRTS, INSULATION & INTERIOR METAL PANELS ABOVE.
- INTERIOR GUB PARTITION:
4" METAL STUDS (20 GA.) @ 16" O.C. W/ 5/8" GUB EACH SIDE, W/ 3 1/2" SOUND ATTENUATION BATT INSULATION (STC 49) IN ALL PARTITIONS. EXTEND GUB & INSULATION TO UNDERSIDE OF MEZZANINE ABOVE UNLESS NOTED OTHERWISE.
- INTERIOR CMU/GUB PARTITION (3HR):
8" CMU TO 20'-8" AFFUL DESIGN NO. U9071 W/ CONCRETE CEILING STRUCTURE ABOVE.
- BRACKET MOUNTED FIRE EXTINGUISHER:
FIRE EXTINGUISHER SHALL BE UL-RATED 4-A:60:B:C, 10 LB NOMINAL.

GENERAL NOTES

- SEE ENLARGED FLOOR PLANS FOR SPECIALTIES TO BE FURNISHED FOR TOILET ROOMS. LOCATION OF WALL MOUNTED EQUIPMENT, TOILET ACCESSORIES, ETC. SHOWN IN ENLARGED PLANS TAKES PRECEDENCE OVER LOCATION SHOWN IN 1/8" SCALE PLANS.
- REFER TO INTERIOR ELEVATION DRAWINGS WHICH CORRESPOND TO ROOM NUMBER FOR CASEWORK SHOWN IN PLAN.
- WALL CONTROL JOINTS HAVE TYPICALLY BEEN INDICATED ON THE EXTERIOR ELEVATIONS FOR EXTERIOR WALLS. INTERIOR PARTITION CONTROL JOINTS HAVE NOT BEEN SHOWN ALTHOUGH THEY ARE REQUIRED AS SPECIFIED.
- COORDINATE LOCATION OF CONTROL JOINTS IN MASONRY AND CONCRETE WITH ARCHITECT TO COMPLY WITH THE SPECIFICATIONS.

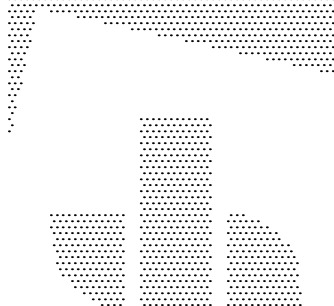
NO	DATE	REVISION

Hicks
Nation
Architects
Incorporated

Architecture
Programming
Planning

1382
Timberlane Road
Suite C
Tallahassee FL
32312
850.893.1130
License Number
AA C00 1403

RESEARCH BUILDING
CENTER FOR ADVANCED POWER SYSTEMS
FSU PROJECT NO. 180035
FLORIDA STATE UNIVERSITY
FLOOR PLAN & MEZZANINE/EQUIPMENT PLATFORM PLAN



John W. Nation
AR 12778

DATE
JULY 6, 2018

PROJECT NO.

1708

DESIGNED BY

JWN

DRAWN BY

MFL

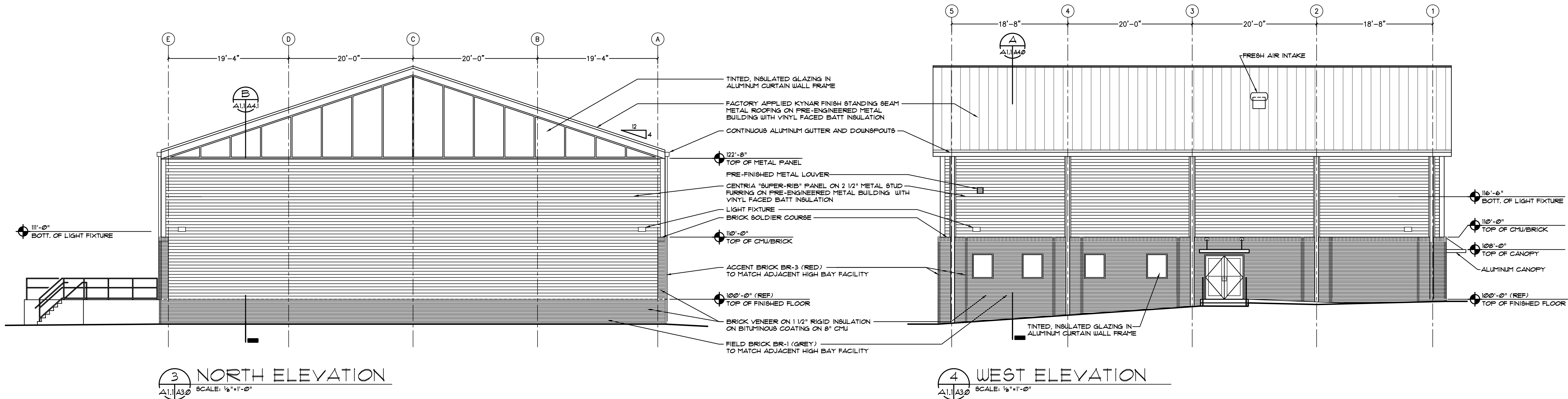
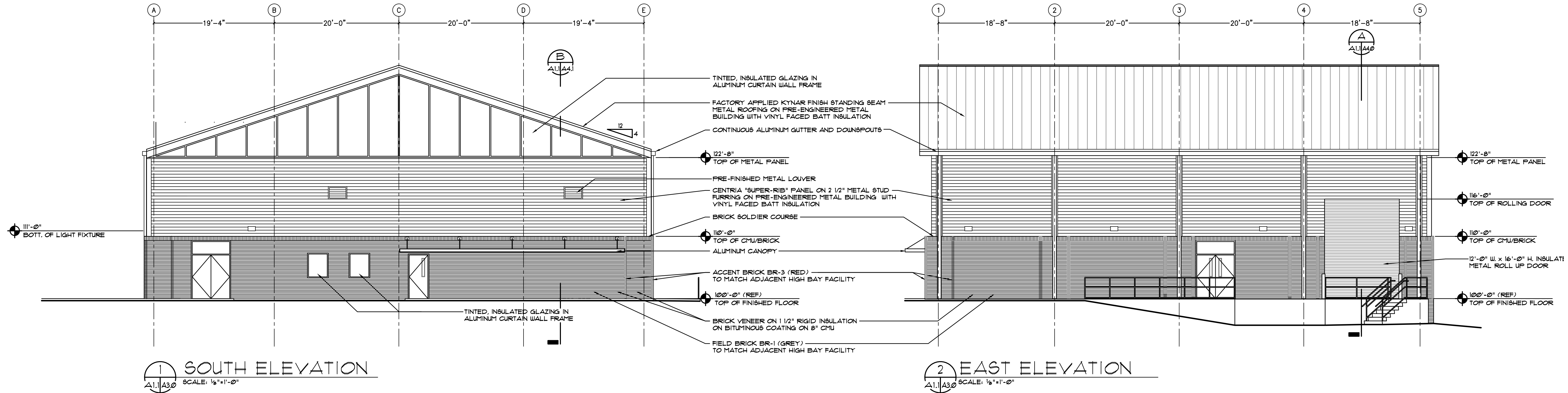
CHECKED BY

JWN

DWG. NO.

A1.1

THESE DRAWINGS AND RENDERINGS ARE INSTRUMENTS OF SERVICE. THE DRAWINGS AND COPIES THEREOF, INCLUDING ELECTRONIC MEDIA AND CAD FILES ARE THE PROPERTY OF HICKS NATION ARCHITECT, INC. THEIR USE, REPRESENTATION OR REPRODUCTION IN ANY FORM OR CONTENT BY ANY OTHER PERSON OR ENTITY WITHOUT THE WRITTEN PERMISSION OF HICKS NATION ARCHITECT, INC. IS PROHIBITED. THIS COPYRIGHT NOTIFICATION SHALL BE TRUE AS IF DIRECTLY PLACED ON EACH DRAWING EXHIBIT OR RENOVING ON THIS DOCUMENT AND SHALL NOT BE REMOVED FROM THESE DOCUMENTS. JOHN W. NATION COPYRIGHT © 2012



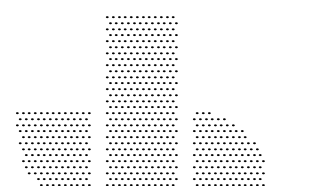
NO	DATE	REVISION

Hicks
Nation
Architects
Incorporated

Architecture
Programming
Planning

1382
Timberlane Road
Suite C
Tallahassee FL
32312
850.893.1130
License Number
AA C00 1403

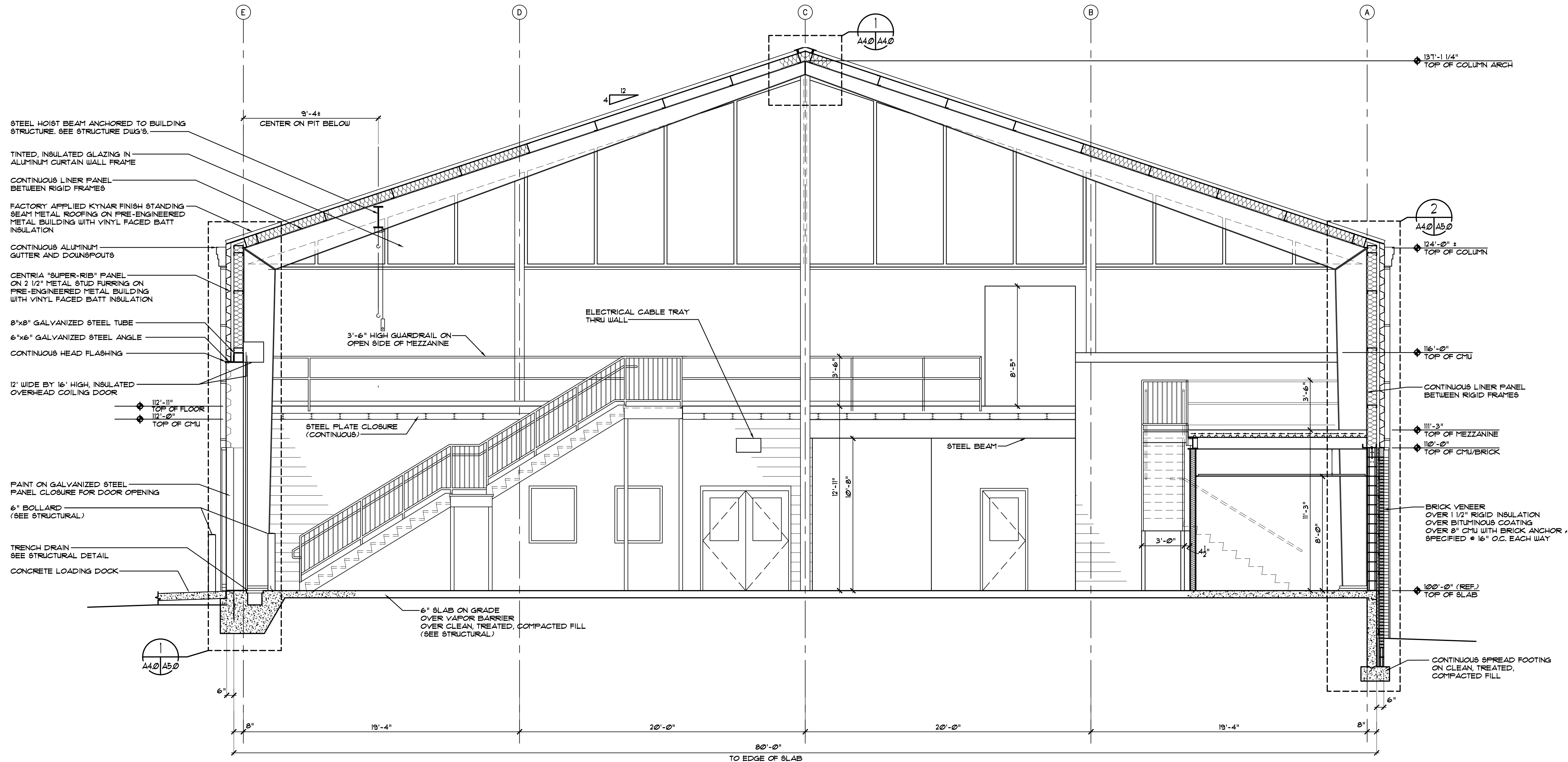
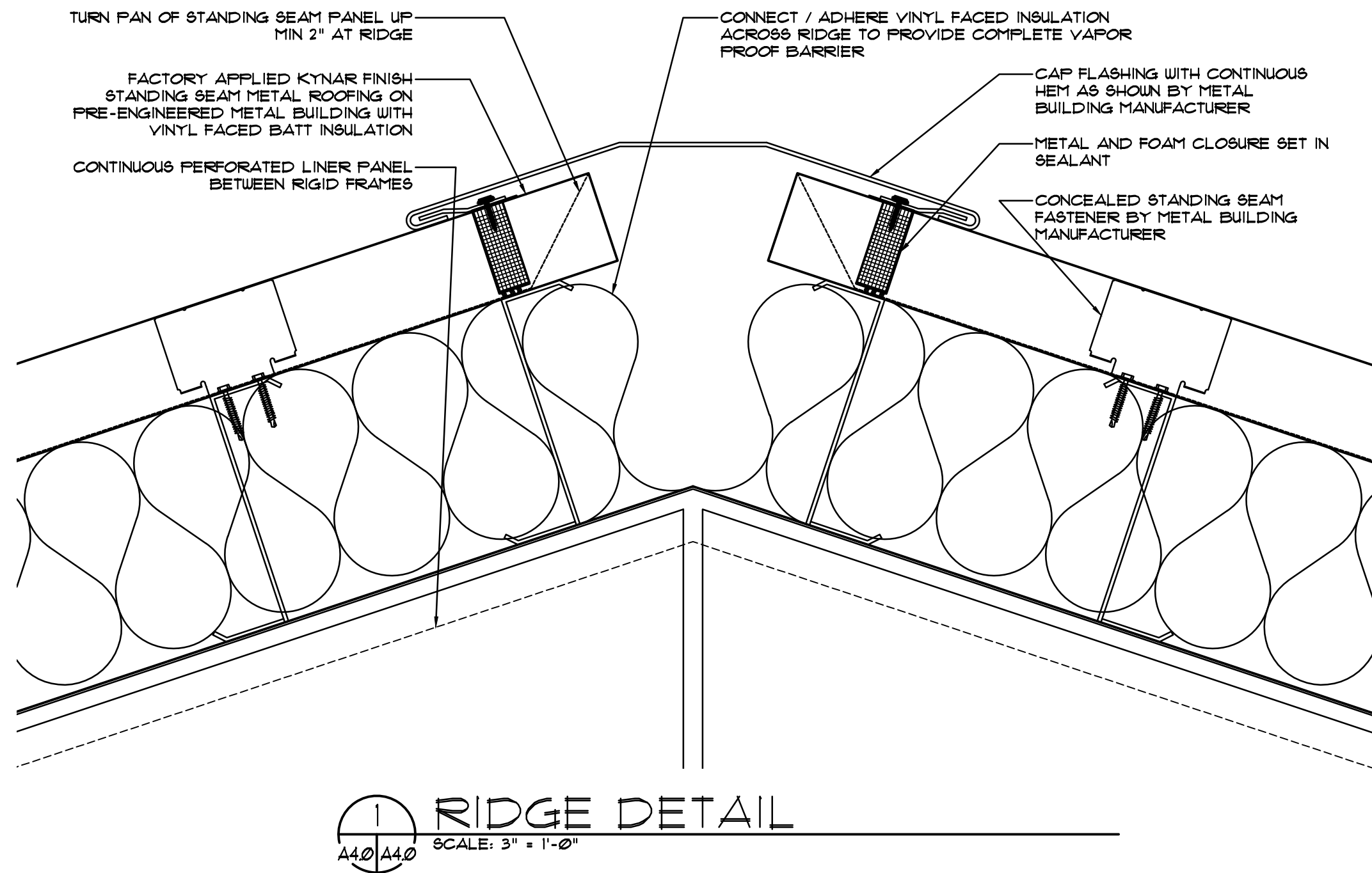
RESEARCH BUILDING
CENTER FOR ADVANCED POWER SYSTEMS
FSU PROJECT NO. 1800035
FLORIDA STATE UNIVERSITY
EXTERIOR ELEVATIONS



John W. Nation
AR 12778

DATE
JULY 6, 2018
PROJECT NO.
1708
DESIGNED BY
JWN
DRAWN BY
MFL/JTM
CHECKED BY
JWN
DWG. NO.

A3.0



THESE DRAWINGS AND RENDERINGS ARE INSTRUMENTS OF SERVICE. THE DRAWINGS AND COPIES THEREOF, INCLUDING ELECTRONIC MEDIA AND CAD FILES ARE THE PROPERTY OF HICKS NATION ARCHITECT, INC. THEIR USE, REPRESENTATION OR REPRODUCTION IN ANY FORM OR CONTENT BY ANY PERSON OR ENTITY WITHOUT THE WRITTEN PERMISSION OF HICKS NATION ARCHITECT, INC. IS PROHIBITED. THESE DOCUMENTS, JOHN W. NATION, COPYRIGHT © 2018

NO.	DATE	REVISION

Hicks
Nation
Architects
Incorporated

Architecture
Programming
Planning

1382
Timberlane Road
Suite C
Tallahassee FL
32312
850.893.1130
License Number
AA C00 1403

RESEARCH BUILDING
CENTER FOR ADVANCED POWER SYSTEMS
FSU PROJECT NO. 1800035
FLORIDA STATE UNIVERSITY
BUILDING SECTION

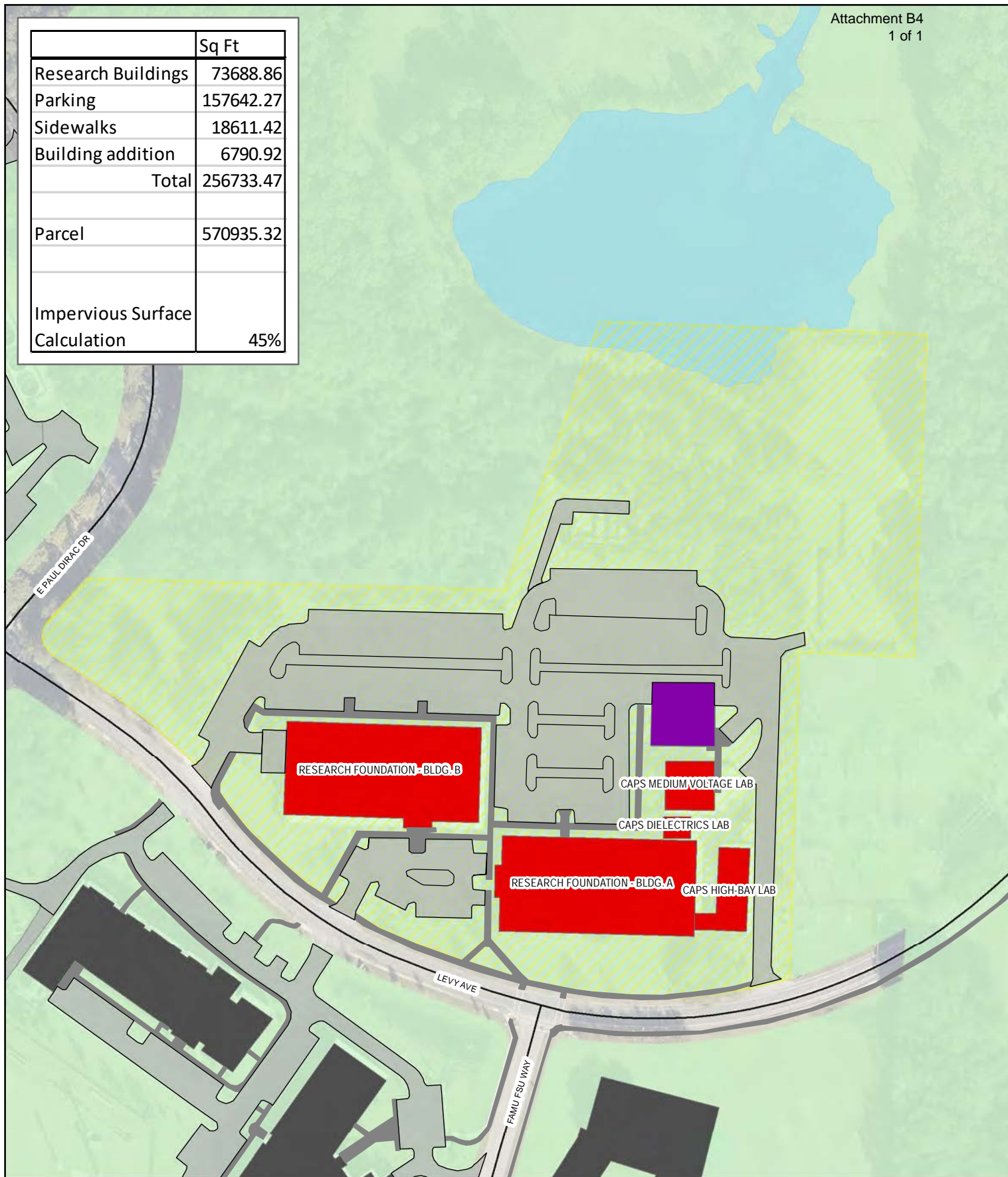
John W. Nation
AR 12778

DATE
JULY 6, 2018
PROJECT NO.
1708
DESIGNED BY
JWN
DRAWN BY
MFL
CHECKED BY
JWN
DWG. NO.

A4.0

SHEET OF

	Sq Ft
Research Buildings	73688.86
Parking	157642.27
Sidewalks	18611.42
Building addition	6790.92
Total	256733.47
Parcel	570935.32
Impervious Surface Calculation	45%

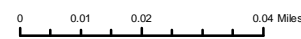


Florida State University Research Foundation Impervious Surface Calculations

- Building Addition
- Research Buildings
- FSU Buildings
- FSU Parcels
- Walkways
- Parking

Map created by:
Morgan Runion, Facilities Planning
mrunion@fsu.edu

June 2018



Source: FSU Facilities Planning & TLGIS

6/25/2018